

Recombinant Human XRCC5 protein(571-730 aa), C-His-tagged

Cat. No. XRCC5-2646H Lot. No. (See product label)

SPECIFICATION

Product Overview	Recombinant Human XRCC5 protein(P13010)(571-730 aa), fused with C-terminal His tag, was expressed in E. coli.
Species	Human
Source	E.coli
ProteinLength	571-730 aa
Form	0.15 M Phosphate buffered saline
Molecular Mass	19.5 kDa
Storage	Shipped on dry ice. Avoid repeated freeze-thaw cycles. Upon receipt, 2 days when stored at 2 to 8 °C after thawing. Up to 12 months when aliquoted and stored at -20 to -80°C.
Reconstitution	It is recommended that sterile water be added to the vial to prepare a stock solution of 0.2 ug/ul. Centrifuge the vial at 4°C before opening to recover the entire contents.
AA Sequence	QGGAHFSVSSLAEGSVTSVGSVNPAENFRVLVKQKKASFEEASNQLINHIEQFLDTN ETPYFMKSIDCIRAFREEAIKFSEEQRFNFLKALQEIKQLNHFWEIVVQDGITLIT KEEASGSSVTAEAKKFLAPKDKPSGDAAVFEEGGDVEDLLD

GENE INFORMATION

 Tel: 1-631-559-9269 1-516-512-3133

 Email: info@creative-biomart.com  Fax: 1-631-938-8127

 45-1 Ramsey Road, Shirley, NY 11967, USA

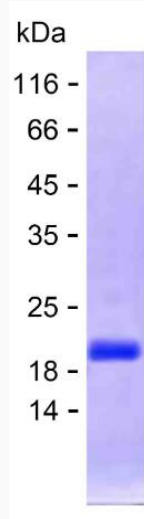
Gene Name	XRCC5 X-ray repair complementing defective repair in Chinese hamster cells 5 (double-strand-break rejoining) [Homo sapiens]
Official Symbol	XRCC5
Synonyms	XRCC5; X-ray repair complementing defective repair in Chinese hamster cells 5 (double-strand-break rejoining); X ray repair complementing defective repair in Chinese hamster cells 5 (double strand break rejoining; Ku autoantigen, 80kD); X-ray repair cross-complementing protein 5; KARP 1; Ku autoantigen; 80kDa; KU80; Ku86; KUB2; TLAA; CTC85; CTCBF; nuclear factor IV; Ku autoantigen, 80kDa; DNA repair protein XRCC5; thyroid-lupus autoantigen; 86 kDa subunit of Ku antigen; lupus Ku autoantigen protein p86; Ku86 autoantigen related protein 1; CTC box-binding factor 85 kDa subunit; ATP-dependent DNA helicase 2 subunit 2; ATP-dependent DNA helicase II 80 kDa subunit; NFIV; KARP1; KARP-1; FLJ39089;
Gene ID	7520
mRNA Refseq	NM_021141
Protein Refseq	NP_066964
MIM	194364
UniProt ID	P13010

 Tel: 1-631-559-9269 1-516-512-3133

 Email: info@creative-biomart.com  Fax: 1-631-938-8127

 45-1 Ramsey Road, Shirley, NY 11967, USA

SDS-PAGE



 Tel: 1-631-559-9269 1-516-512-3133

 Email: info@creative-biomart.com  Fax: 1-631-938-8127

 45-1 Ramsey Road, Shirley, NY 11967, USA