

Recombinant Human XRCC5 Protein (Leu384-Ile732), N-His tagged

Cat. No. XRCC5-6579H Lot. No. (See product label)

SPECIFICATION

Product Overview	Recombinant human XRCC5/Ku80 (Leu384-Ile732) fused with the N-His tag was expressed in E. coli.
Species	Human
Source	E.coli
ProteinLength	Leu384-Ile732
Form	Lyophilized powder/frozen liquid
Molecular Mass	41.91 kDa
Purity	> 90 % as determined by SDS-PAGE
Notes	For research use only.
Storage	Use a manual defrost freezer and avoid repeated freeze thaw cycles. Store at 2 to 8 centigrade for one week. Store at -20 to -80 centigrade for twelve months from the date of receipt.
Storage Buffer	0.01M PBS, pH 7.4, 0.02 % NLS
Reconstitution	Reconstitute in sterile water for a stock solution.

 Tel: 1-631-559-9269 1-516-512-3133

 Email: info@creative-biomart.com  Fax: 1-631-938-8127

 45-1 Ramsey Road, Shirley, NY 11967, USA

Shipping They are shipped out with dry ice/blue ice unless customers require otherwise.

GENE INFORMATION

Gene Name [XRCC5 X-ray repair cross complementing 5 \[Homo sapiens \(human\) \]](#)

Official Symbol [XRCC5](#)

Synonyms XRCC5; X-ray repair complementing defective repair in Chinese hamster cells 5 (double-strand-break rejoining); X ray repair complementing defective repair in Chinese hamster cells 5 (double strand break rejoining; Ku autoantigen, 80kD); X-ray repair cross-complementing protein 5; KARP 1; Ku autoantigen; 80kDa; KU80; Ku86; KUB2; TLAA; CTC85; CTCBF; nuclear factor IV; Ku autoantigen, 80kDa; DNA repair protein XRCC5; thyroid-lupus autoantigen; 86 kDa subunit of Ku antigen; lupus Ku autoantigen protein p86; Ku86 autoantigen related protein 1; CTC box-binding factor 85 kDa subunit; ATP-dependent DNA helicase 2 subunit 2; ATP-dependent DNA helicase II 80 kDa subunit; NFIV; KARP1; KARP-1; FLJ39089;

Gene ID [7520](#)

mRNA Refseq [NM_021141](#)

Protein Refseq [NP_066964](#)

MIM [194364](#)

UniProt ID [P13010](#)

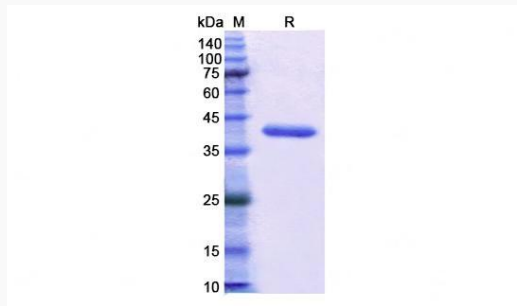
 Tel: 1-631-559-9269 1-516-512-3133

 Email: info@creative-biomart.com  Fax: 1-631-938-8127

 45-1 Ramsey Road, Shirley, NY 11967, USA



SDS-PAGE



Tel: 1-631-559-9269 1-516-512-3133

Email: info@creative-biomart.com Fax: 1-631-938-8127

45-1 Ramsey Road, Shirley, NY 11967, USA