

Recombinant Full Length Human XRCC6 Protein, C-Flag-tagged

Cat. No. XRCC6-484HFL **Lot. No.** (See product label)

SPECIFICATION

Product Overview	Recombinant Full Length Human XRCC6 Protein, fused to Flag-tag at C-terminus, was expressed in Mammalian cells.
Species	Human
Source	Mammalian Cells
Description	The p70/p80 autoantigen is a nuclear complex consisting of two subunits with molecular masses of approximately 70 and 80 kDa. The complex functions as a single-stranded DNA-dependent ATP-dependent helicase. The complex may be involved in the repair of nonhomologous DNA ends such as that required for double-strand break repair, transposition, and V(D)J recombination. High levels of autoantibodies to p70 and p80 have been found in some patients with systemic lupus erythematosus.
Form	25 mM Tris HCl, pH 7.3, 100 mM glycine, 10% glycerol.
Molecular Mass	69.7 kDa
AA Sequence	MSGWESYYKTEGDEEAEEEEQEENLEASGDYKYSGRDSLIFLVDASKAMFESQSED ELTPFDMSIQCIQSV YISKIISDRDLLAVVFGYTEKDKNVNFKNIIYVLQELDNPGAK RILELDQFKGQQGQKRFQDMMGHGSD YSLSEVLWVCANLFSDVQFKMSHKRIMLF TNEDNPHGNSAKASRARTKAGDLRDTGIFLDMHLKPPGG FDISLFYRDIISIAEDE DLRVHFEESKLEDLLRKVRACKETRKRALSRLKLNKDIVISVGIYNLVQKA LKPPPI

 Tel: 1-631-559-9269 1-516-512-3133

 Email: info@creative-biomart.com  Fax: 1-631-938-8127

 45-1 Ramsey Road, Shirley, NY 11967, USA

KLYRETNEPVKTKTRTFNTSTGGLLLPSDTKRSQIYGSRQIILEKEETEELKRFDDPG
 LMLMGF KPLVLLKHHYLRPSLFVYPEESLVIGSSTLFSALLIKCLEKEVAALCRYTP
 RRNIPPYFVALVPQEEEL DDQKIQVTPPGFQLVFLPFADDKRKMPFTEKIMATPEQV
 GKMKAIVEKLRFTYRSDSFENPVLQQHFRNL EALALDLMEPEQAVDLTLPKVEAMN
 KRLGSLVDEFKELVYPPDYNPEGKVTKRKHDNEGSGSKRPKVEYS
 EEELKTHISKGTLGKFTVPMLKEACRAYGLKSGLKKQELLEALTKHFQDTRTRPLEQ
 KLISEEDLAANDILDYKDDDDKV

Purity > 80% as determined by SDS-PAGE and Coomassie blue staining.

Stability Stable for 12 months from the date of receipt of the product under proper storage and handling conditions. Avoid repeated freeze-thaw cycles.

Storage Store at -80 centigrade.

Concentration >50 ug/mL as determined by microplate BCA method.

Preparation Recombinant protein was captured through anti-DDK affinity column followed by conventional chromatography steps.

Protein Families Druggable Genome, Transcription Factors

Protein Pathways Non-homologous end-joining

Full Length Full L.

GENE INFORMATION

Gene Name XRCC6 X-ray repair cross complementing 6 [Homo sapiens (human)]

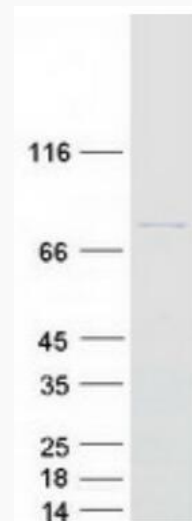
Official Symbol XRCC6

 Tel: 1-631-559-9269 1-516-512-3133

 Email: info@creative-biomart.com  Fax: 1-631-938-8127

 45-1 Ramsey Road, Shirley, NY 11967, USA

Synonyms	ML8; KU70; TLAA; CTC75; CTCBF; G22P1
Gene ID	2547
mRNA Refseq	NM_001469.5
Protein Refseq	NP_001460.1
MIM	152690
UniProt ID	P12956



Coomassie blue staining of purified XRCC6 protein.

 Tel: 1-631-559-9269 1-516-512-3133

 Email: info@creative-biomart.com  Fax: 1-631-938-8127

 45-1 Ramsey Road, Shirley, NY 11967, USA