

## Recombinant Human XRCC6 protein, His-tagged

Cat. No. XRCC6-5170H Lot. No. (See product label)

### SPECIFICATION

<b>Product Overview</b>	Recombinant Human XRCC6 protein(P12956)(6-222aa), fused to N-terminal His tag, was expressed in E. coli.
<b>Species</b>	Human
<b>Source</b>	E.coli
<b>ProteinLength</b>	6-222aa
<b>Form</b>	If the delivery form is liquid, the default storage buffer is Tris/PBS-based buffer, 5%-50% glycerol. If the delivery form is lyophilized powder, the buffer before lyophilization is Tris/PBS-based buffer, 6% Trehalose, pH 8.0.
<b>Molecular Mass</b>	28.8 kDa
<b>Purity</b>	Greater than 90% as determined by SDS-PAGE.
<b>Storage</b>	Store at -20°C/-80°C upon receipt, aliquoting is necessary for multiple use. Avoid repeated freeze-thaw cycles.
<b>Reconstitution</b>	Please reconstitute protein in deionized sterile water to a concentration of 0.1-1.0 mg/mL. We recommend to add 5-50% of glycerol (final concentration) and aliquot for long-term storage at -20°C/-80°C. Our default final concentration of glycerol is 50%.

 Tel: 1-631-559-9269 1-516-512-3133

 Email: [info@creative-biomart.com](mailto:info@creative-biomart.com)  Fax: 1-631-938-8127

 45-1 Ramsey Road, Shirley, NY 11967, USA

## GENE INFORMATION

**Gene Name** XRCC6 X-ray repair complementing defective repair in Chinese hamster cells 6 [ Homo sapiens ]

**Official Symbol** XRCC6

**Synonyms** XRCC6; X-ray repair complementing defective repair in Chinese hamster cells 6; G22P1, thyroid autoantigen 70kD (Ku antigen) , thyroid autoantigen 70kDa (Ku antigen); X-ray repair cross-complementing protein 6; D22S671; D22S731; Ku autoantigen; 70kDa; KU70; ML8; 5-dRP lyase Ku70; Ku autoantigen, 70kDa; DNA repair protein XRCC6; Ku autoantigen p70 subunit; 70 kDa subunit of Ku antigen; thyroid-lupus autoantigen p70; lupus Ku autoantigen protein p70; 5-deoxyribose-5-phosphate lyase Ku70; CTC box binding factor 75 kDa subunit; CTC box-binding factor 75 kDa subunit; thyroid autoantigen 70kD (Ku antigen); ATP-dependent DNA helicase 2 subunit 1; thyroid autoantigen 70kDa (Ku antigen); ATP-dependent DNA helicase II 70 kDa subunit; ATP-dependent DNA helicase II, 70 kDa subunit; TLAA; CTC75; CTCBF; G22P1;

**Gene ID** 2547

**mRNA Refseq** NM\_001469

**Protein Refseq** NP\_001460

**MIM** 152690

**UniProt ID** P12956

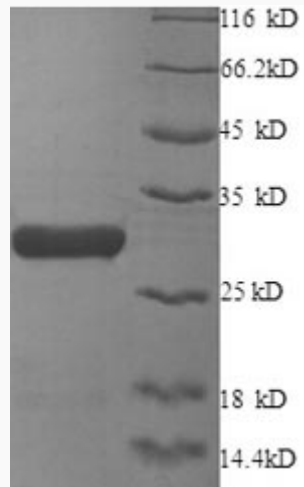
 Tel: 1-631-559-9269 1-516-512-3133

 Email: [info@creative-biomart.com](mailto:info@creative-biomart.com)  Fax: 1-631-938-8127

 45-1 Ramsey Road, Shirley, NY 11967, USA



SDS-PAGE



Tel: 1-631-559-9269 1-516-512-3133

Email: [info@creative-biomart.com](mailto:info@creative-biomart.com) Fax: 1-631-938-8127

45-1 Ramsey Road, Shirley, NY 11967, USA