

Recombinant Human XRCC6 Protein, Myc/DDK-tagged, C13 and N15-labeled

Cat. No. XRCC6-5925H Lot. No. (See product label)

SPECIFICATION

Product Overview	XRCC6 MS Standard C13 and N15-labeled recombinant protein (NP_001460) with a C-terminal MYC/DDK tag, was expressed in HEK293 cells.
Species	Human
Source	HEK293
Description	The p70/p80 autoantigen is a nuclear complex consisting of two subunits with molecular masses of approximately 70 and 80 kDa. The complex functions as a single-stranded DNA-dependent ATP-dependent helicase. The complex may be involved in the repair of nonhomologous DNA ends such as that required for double-strand break repair, transposition, and V(D)J recombination. High levels of autoantibodies to p70 and p80 have been found in some patients with systemic lupus erythematosus.
Molecular Mass	69.8 kDa
AA Sequence	MSGWESYYKTEGDEEAEEEEQEENLEASGDYKYSGRDSLIFLVDASKAMFESQSED ELTPFDMSIQCIQSVYISKIISDRDLLAVVFGTEKDKNVNFKNIVLQELDNPGAK RILELDQFKGQQGQKRFQDMMGHGSDYLSSEVLWVCANLFSQVQFKMCHKRIMLF TNEDNPHGNSAKASRARTKAGDLRDTGIFLDMHLKKPGGFDISLFYRDIISIAEDE DLRVHFEESKLEDLLRKVRAKETRKRLSRLKLNKDIVISVGIYNLVQKALKPPPI KLYRETNEPVKTKTRTFNTSTGGLLLPSDTKRSQIYGSRQIILEKEETEELKRFDDPG

 Tel: 1-631-559-9269 1-516-512-3133

 Email: info@creative-biomart.com  Fax: 1-631-938-8127

 45-1 Ramsey Road, Shirley, NY 11967, USA

LMLMGFKPLVLLKKHHYLRPSLFVYPEESLVIGSSTLFSALLIKCLEKEVAALCRYTPR
 RNIPPYFVALVPQEEELDDQKIQVTPPGFQLVFLPFADDKRKMPFTEKIMATPEQVG
 KMKAIVEKLRFTYRSDSFENPVLQQHFRNLEALALDLMEPEQAVDLTLPKVEAMNKR
 LGSLVDEFKELVYPPDYNPEGKVTKRKHDNEGSGSKRPKVEYSEEELKTHISKGTLG
 KFTVPMLKEACRAYGLKSGLKKQELLEALTKHFQDTRTRPLEQKLISEEDLAANDILD
 YKDDDDKV

Purity > 80% as determined by SDS-PAGE and Coomassie blue staining

Stability Stable for 3 months from receipt of products under proper storage and handling conditions.

Storage Store at -80 centigrade. Avoid repeated freeze-thaw cycles.

Concentration 50 µg/mL as determined by BCA

Storage Buffer 100 mM glycine, 25 mM Tris-HCl, pH 7.3.

GENE INFORMATION

Gene Name XRCC6 X-ray repair complementing defective repair in Chinese hamster cells 6 [*Homo sapiens* (human)]

Official Symbol XRCC6

Synonyms

XRCC6; X-ray repair complementing defective repair in Chinese hamster cells 6; G22P1, thyroid autoantigen 70kD (Ku antigen), thyroid autoantigen 70kDa (Ku antigen); X-ray repair cross-complementing protein 6; D22S671; D22S731; Ku autoantigen; 70kDa; KU70; ML8; 5-dRP lyase Ku70; Ku autoantigen, 70kDa; DNA repair protein XRCC6; Ku autoantigen p70 subunit; 70 kDa subunit of Ku antigen; thyroid-lupus autoantigen p70; lupus Ku autoantigen protein p70; 5-deoxyribose-5-

 Tel: 1-631-559-9269 1-516-512-3133

 Email: info@creative-biomart.com  Fax: 1-631-938-8127

 45-1 Ramsey Road, Shirley, NY 11967, USA

phosphate lyase Ku70; CTC box binding factor 75 kDa subunit; CTC box-binding factor 75 kDa subunit; thyroid autoantigen 70kD (Ku antigen); ATP-dependent DNA helicase 2 subunit 1; thyroid autoantigen 70kDa (Ku antigen); ATP-dependent DNA helicase II 70 kDa subunit; ATP-dependent DNA helicase II, 70 kDa subunit; TLAA; CTC75; CTCBF; G22P1;

Gene ID [2547](#)

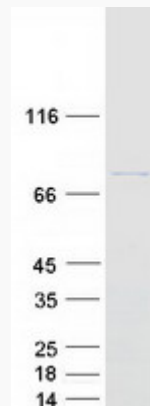
mRNA Refseq [NM_001469](#)

Protein Refseq [NP_001460](#)

MIM [152690](#)

UniProt ID [P12956](#)

SDS-PAGE



 Tel: 1-631-559-9269 1-516-512-3133

 Email: info@creative-biomart.com  Fax: 1-631-938-8127

 45-1 Ramsey Road, Shirley, NY 11967, USA