

Recombinant Human XYLB Protein, Myc/DDK-tagged, C13 and N15-labeled

Cat. No. XYLB-2994H **Lot. No.** (See product label)

SPECIFICATION

Product Overview	XYLB MS Standard C13 and N15-labeled recombinant protein (NP_005099) with a C-terminal MYC/DDK tag, was expressed in HEK293 cells.
Species	Human
Source	HEK293
Description	The protein encoded by this gene shares 22% sequence identity with Hemophilus influenzae xylulokinase, and even higher identity to other gene products in C.elegans (45%) and yeast (31-35%), which are thought to belong to a family of enzymes that include fucokinase, gluconokinase, glycerokinase and xylulokinase. These proteins play important roles in energy metabolism.
Molecular Mass	58.2 kDa
AA Sequence	<p>MAEHAPRRCCLGWDFSTQQVKVVAVDAELNVFYEESVHFDRDLPEFGTQGGVHVH KDGLTVTSPVLMWVQALDIILEKMKASGFDFSQVLALSGAGQQHGSYWKAGAQQA LTSLSPDLRLHQQLQDCFSISDCPVWMDSSTTAQCRQLEAAVGAQALSCLTGSRA YERFTGNQIAKIYQQNPEAYSHTERISLVSSFAASLFLGSYSPIDYSDGSGMNLQIQ DKVWSQACLGACAPHLEEKLSPPVPSCSVVGAISSYVQRYGFPPGCKVVAFTGDN PASLAGMRLEEGDIAVSLGTSDLFLWLQEPMPALEGHIFCNPVDSQHYMALLCFKN GSLMREKIRNESVSRWSWDFSKALQSTEMGNGGNLGFYFDVMEITPEIIGRHRFNTE NHKVAAFP GDVEVRALIEGQFMAKRIHAEGLGYRVMSKTKILATGGASHNREILQVL</p>

 Tel: 1-631-559-9269 1-516-512-3133

 Email: info@creative-biomart.com  Fax: 1-631-938-8127

 45-1 Ramsey Road, Shirley, NY 11967, USA

ADVFDAPVYVIDTANSACVGSAYRAFHGLAGGTDVPFSEVVKLAPNPRLAATPSPG
ASQVYEALLPQYAKLEQRILSQTRGPPETRTRPLEQKLISEEDLAANDILDYKDDDDK
V

Purity > 80% as determined by SDS-PAGE and Coomassie blue staining

Stability Stable for 3 months from receipt of products under proper storage and handling conditions.

Storage Store at -80 centigrade. Avoid repeated freeze-thaw cycles.

Concentration 50 µg/mL as determined by BCA

Storage Buffer 100 mM glycine, 25 mM Tris-HCl, pH 7.3.

GENE INFORMATION

Gene Name [XYLB xylulokinase \[Homo sapiens \(human\) \]](#)

Official Symbol [XYLB](#)

Synonyms XYLB; xylulokinase; xylulose kinase; D-xylulokinase; xylulokinase homolog (H. influenzae); EC 2.7.1.17

Gene ID [9942](#)

mRNA Refseq [NM_005108](#)

Protein Refseq [NP_005099](#)

MIM [604049](#)

 Tel: 1-631-559-9269 1-516-512-3133

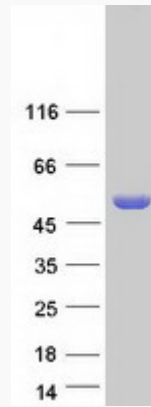
 Email: info@creative-biomart.com  Fax: 1-631-938-8127

 45-1 Ramsey Road, Shirley, NY 11967, USA

UniProt ID

O75191

SDS-PAGE



 Tel: 1-631-559-9269 1-516-512-3133

 Email: info@creative-biomart.com  Fax: 1-631-938-8127

 45-1 Ramsey Road, Shirley, NY 11967, USA