

Recombinant Rat Xcl1 protein, His & GST-tagged

Cat. No. Xcl1-7708R **Lot. No.** (See product label)

SPECIFICATION

Product Overview	Recombinant Rat Xcl1 aa. (Gly23~Thr113) fused with N-terminal His & GST tag was produced in E. coli cells.
Species	Rat
Source	E.coli
ProteinLength	Gly23~Thr113
Form	Freeze-dried powder
Molecular Mass	42kDa as determined by SDS-PAGE reducing conditions.
Endotoxin	<1.0EU per 1g (determined by the LAL method)
Purity	>90%
Characteristic	The isoelectric point is 8.8.
Applications	SDS-PAGE; WB; ELISA; IP; CoIP; Reporter Assays; Purification; Amine Reactive Labeling.
Stability	The thermal stability is described by the loss rate. The loss rate was determined by accelerated thermal degradation test, that is, incubate the protein at 37°C for 48h, and no obvious degradation and precipitation were observed. The loss rate is less

 Tel: 1-631-559-9269 1-516-512-3133

 Email: info@creative-biomart.com  Fax: 1-631-938-8127

 45-1 Ramsey Road, Shirley, NY 11967, USA

than 5% within the expiration date under appropriate storage condition.

Storage

Avoid repeated freeze/thaw cycles. Store at 2-8°C for one month. Aliquot and store at -80°C for 12 months.

Concentration

200µg/mL

Storage buffer

20mM Tris, 150mM NaCl, pH8.0, containing 1mM EDTA, 1mM DTT, 0.01% sarcosyl, 5%Trehalose and Proclin300.

Reconstitution

Reconstitute in 20mM Tris, 150mM NaCl (pH8.0) to a concentration of 0.1-1.0 mg/mL. Do not vortex.

GENE INFORMATION

Gene Name

[Xcl1 X-C motif chemokine ligand 1 \[Rattus norvegicus \(Norway rat\) \]](#)

Official Symbol

[Xcl1](#)

Synonyms

Ltn; Scyc1; c motif chemokine 1; chemokine (C motif) ligand 1; cytokine SCM-1; small inducible cytokine subfamily C, member 1 (lymphotactin); small-inducible cytokine C1; lymphotactin

Gene ID

[171371](#)

mRNA Refseq

[NM_134361.1](#)

Protein Refseq

[NP_599188.1](#)

UniProt ID

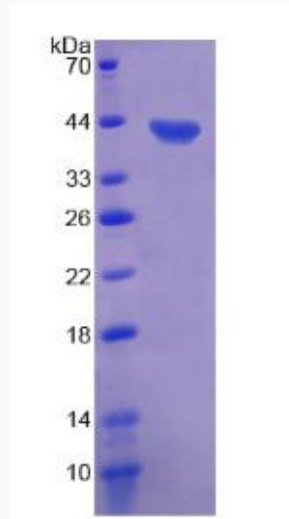
[P51672](#)

 Tel: 1-631-559-9269 1-516-512-3133

 Email: info@creative-biomart.com  Fax: 1-631-938-8127

 45-1 Ramsey Road, Shirley, NY 11967, USA

SDS-PAGE



 Tel: 1-631-559-9269 1-516-512-3133

 Email: info@creative-biomart.com  Fax: 1-631-938-8127

 45-1 Ramsey Road, Shirley, NY 11967, USA