

Recombinant Mouse Xcr1 protein, His-tagged

Cat. No. Xcr1-585M **Lot. No.** (See product label)

SPECIFICATION

Product Overview	Recombinant Mouse Xcr1 protein(NP_035928.2)(Thr244~Tyr322), fused to N-terminal His Tag, was expressed in E. coli.
Species	Mouse
Source	E.coli
ProteinLength	Thr244~Tyr322
Form	20mM Tris, 150mM NaCl, pH8.0, containing 1mM EDTA, 1mM DTT, 0.01% SKL, 5% Trehalose and Proclin300.
Molecular Mass	15kDa as determined by SDS-PAGE reducing conditions.
Endotoxin	<1.0EU per 1g (determined by the LAL method)
Purity	> 90%
Applications	Positive Control; Immunogen; SDS-PAGE; WB.
Notes	The kit is designed for research use only, we will not be responsible for any issue if the kit was used in clinical diagnostic or any other procedures.
Stability	The thermal stability is described by the loss rate. The loss rate was determined by accelerated thermal degradation test, that is, incubate the protein at 37°C for 48h,

 Tel: 1-631-559-9269 1-516-512-3133

 Email: info@creative-biomart.com  Fax: 1-631-938-8127

 45-1 Ramsey Road, Shirley, NY 11967, USA

and no obvious degradation and precipitation were observed. The loss rate is less than 5% within the expiration date under appropriate storage condition.

Storage	Avoid repeated freeze/thaw cycles. Store at 2-8°C for one month. Aliquot and store at -80°C for 12 months.
Concentration	200g/mL
Reconstitution	Reconstitute in 20mM Tris, 150mM NaCl (pH8.0) to a concentration of 0.1-1.0 mg/mL. Do not vortex.

GENE INFORMATION

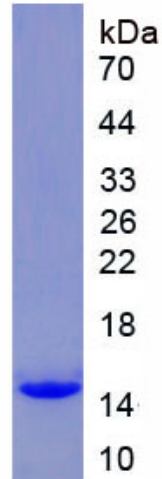
Gene Name	<i>Xcr1</i> chemokine (C motif) receptor 1 [<i>Mus musculus</i> (house mouse)]
Official Symbol	<i>Xcr1</i>
Synonyms	Xcr1; chemokine (C motif) receptor 1; Gpr5; mXcr1; Ccxcr1; chemokine XC receptor 1; C motif-1/lymphotactin receptor; SCM1 receptor; XC chemokine receptor 1; chemokine (C motif) XC receptor 1; lymphotactin receptor
Gene ID	23832
mRNA Refseq	NM_011798.4
Protein Refseq	NP_035928.2
UniProt ID	Q544D8

 Tel: 1-631-559-9269 1-516-512-3133

 Email: info@creative-biomart.com  Fax: 1-631-938-8127

 45-1 Ramsey Road, Shirley, NY 11967, USA

SDS-PAGE



 Tel: 1-631-559-9269 1-516-512-3133

 Email: info@creative-biomart.com  Fax: 1-631-938-8127

 45-1 Ramsey Road, Shirley, NY 11967, USA