

Recombinant Mouse Xpnpep1 Protein, W520E, Flag-tagged

Cat. No. Xpnpep1-7015M Lot. No. (See product label)

SPECIFICATION

Product Overview	Recombinant Mouse Xpnpep1 Protein (W520E, 1-623 aa) with C-Flag tag was expressed in HEK293.
Species	Mouse
Source	HEK293
ProteinLength	1-623 aa
Description	Predicted to enable manganese ion binding activity; metalloaminopeptidase activity; and protein homodimerization activity. Predicted to be involved in bradykinin catabolic process; negative regulation of programmed cell death; and proteolysis. Predicted to be located in cytoplasm. Predicted to be active in cytosol. Orthologous to human XPNPEP1 (X-prolyl aminopeptidase 1).
Tag	C-Flag
Molecular Mass	78 kDa
AA Sequence	MAASRKPPRVRANRQDFQLRNLRRIIEPNEVTPSGDKSVETDHRMAPKVTSELLRQL RQAMRNSEYVAEPIQAYIIPSGDAHQSEYIAPCDCRRAFVSGFDGSAGTAIITEEHAA MWT DGRYFLQAAKQMDNNWTLMKMGLKDTPTQEDWLVSVLPEGSRVGVDP LIIPT DYWKKMAKVLRSAGHHLVPVKENLVDKIWTDRPERPCKPLLTLGLDYTGISWKEKV ADLRLKMAERSIAWFVVTALDEIAWLFNLRGSDVEHNPVFFSYAIVGLETIMLFIDGD RVDAPGVKQHLLLDLGLAEYRIQVLPYKSILSELKALCADLSPREKVWVSDKASYAV

 Tel: 1-631-559-9269 1-516-512-3133

 Email: info@creative-biomart.com  Fax: 1-631-938-8127

 45-1 Ramsey Road, Shirley, NY 11967, USA

SEAIPKDHRCMPYTPICIAKAVKNSAESDGMRRRAHIKDAVALCELFNWLEQEVPKG
 GVTEISAADKAEFRQQADFVDSLFPSTISSTGPNGAIHYAPVPETNRTLSDLDEVYLI
 DSGAQYKDGTTDVTRTMHFGTPTAYEKECFTYVLKGHIAVSAAVFPTGTKGHLLDSF
 ARSALEDGLDYHGTGHGVGSFLNVHEGPCGISYKTFSDPELEAGMIVTDEPGYY
 EDGAFGIRIENVVLPVPAKTKYNFNNGSLTFEPLTLVPIQTKMIDVNALTDKECDWL
 NSYHQTCRDVVGKELQSQGRQEALWLI RETEPVSRQHTRTRPLEQKLISEEDLAA
 NDILDYKDDDDKV

Purity > 80% by SDS-PAGE

Storage Store it under sterile conditions at -20 to -80 centigrade. It is recommended that the protein be aliquoted for optimal storage. Avoid repeated freeze-thaw cycles.

Storage Buffer Sterile 25 mM Tris, pH 7.3, 100 mM glycine, 10% glycerol.

Concentration 0.06 mg/mL by BCA

GENE INFORMATION

Gene Name [Xpnpep1 X-prolyl aminopeptidase \(aminopeptidase P\) 1, soluble \[Mus musculus \(house mouse\) \]](#)

Official Symbol [Xpnpep1](#)

Synonyms XPNPEP1; X-prolyl aminopeptidase (aminopeptidase P) 1, soluble; xaa-Pro aminopeptidase 1; sAmp; X-Pro aminopeptidase 1; soluble aminopeptidase P; cytosolic aminopeptidase P; aminoacylproline aminopeptidase; X-prolyl aminopeptidase 1, soluble; D230045I08Rik

Gene ID [170750](#)

 Tel: 1-631-559-9269 1-516-512-3133

 Email: info@creative-biomart.com  Fax: 1-631-938-8127

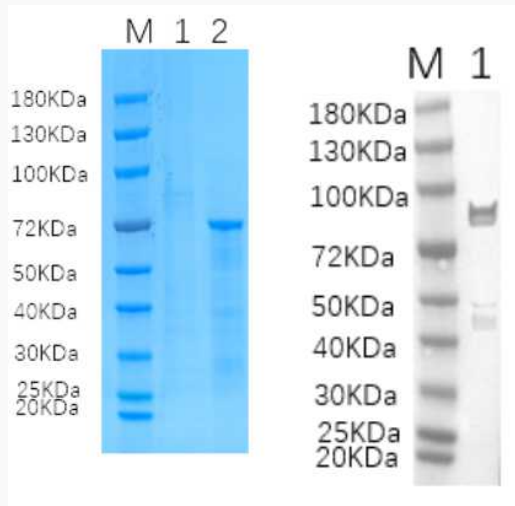
 45-1 Ramsey Road, Shirley, NY 11967, USA

mRNA Refseq [NM_133216](#)

Protein Refseq [NP_573479](#)

UniProt ID [Q3UE92](#)

Reducing 4%-20%
SDS-PAGE (CBB
stained) and WB
(Anti-Flag Mouse
Monoclonal
antibody) analysis
profiles of purified
Xpnpep1.



1. Xpnpep1: 1 μ g
2. BSA: 1 μ g

 Tel: 1-631-559-9269 1-516-512-3133

 Email: info@creative-biomart.com  Fax: 1-631-938-8127

 45-1 Ramsey Road, Shirley, NY 11967, USA