

Recombinant Mouse Xrcc6 Protein, His-tagged

Cat. No. Xrcc6-448M **Lot. No.** (See product label)

SPECIFICATION

Product Overview	Recombinant Mouse Xrcc6(Thr319~Val538) fused with His tag at N-terminal was expressed in E. coli.
Species	Mouse
Source	E.coli
ProteinLength	Thr319~Val538
Description	Xrcc6 played an important role in many functions.
Form	PBS, pH7.4, containing 0.01% SKL, 1mM DTT, 5% Trehalose and Proclin300.
Molecular Mass	29.1kDa
Identity	Reconstitute in PBS or others
Endotoxin	<1.0EU per 1g (determined by the LAL method)
Purity	> 95%
Applications	Positive Control; Immunogen; SDS-PAGE; WB. If bio-activity of the protein is needed, please check active protein
Stability	The thermal stability is described by the loss rate. The loss rate was determined by

 Tel: 1-631-559-9269 1-516-512-3133

 Email: info@creative-biomart.com  Fax: 1-631-938-8127

 45-1 Ramsey Road, Shirley, NY 11967, USA

accelerated thermal degradation test, that is, incubate the protein at 37 centigrade for 48h, and no obvious degradation and precipitation were observed. The loss rate is less than 5% within the expiration date under appropriate storage condition.

Storage

Avoid repeated freeze/thaw cycles. Store at 2-8 centigrade for one month. Aliquot and store at -80 centigrade for 12 months.

Reconstitution

Reconstitute in PBS or others

GENE INFORMATION

Gene Name

[Xrcc6 X-ray repair complementing defective repair in Chinese hamster cells 6 \[Mus musculus \]](#)

Official Symbol

[Xrcc6](#)

Synonyms

XRCC6; X-ray repair complementing defective repair in Chinese hamster cells 6; X-ray repair cross-complementing protein 6; CTC75; CTCBF; Ku p70; 5-dRP/AP lyase Ku70; DNA repair protein XRCC6; thyroid autoantigen 70 kDa; ku autoantigen protein p70 homolog; 5-deoxyribose-5-phosphate lyase Ku70; CTC box-binding factor 75 kDa subunit; ATP-dependent DNA helicase 2 subunit 1; ATP-dependent DNA helicase II 70 kDa subunit; Ku70; 70kDa; G22p1;

Gene ID

[14375](#)

mRNA Refseq

[NM_010247](#)

Protein Refseq

[NP_034377](#)

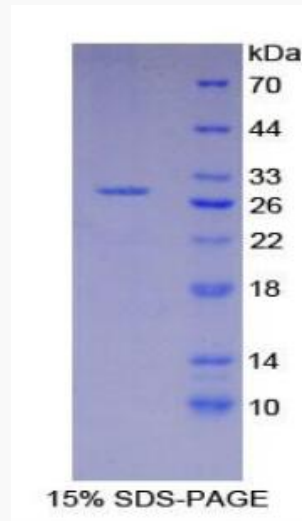
UniProt ID

[P23475](#)

 Tel: 1-631-559-9269 1-516-512-3133

 Email: info@creative-biomart.com  Fax: 1-631-938-8127

 45-1 Ramsey Road, Shirley, NY 11967, USA



Tel: 1-631-559-9269 1-516-512-3133

Email: info@creative-biomart.com Fax: 1-631-938-8127

45-1 Ramsey Road, Shirley, NY 11967, USA