

## Recombinant Human YARS Protein (Gly2-Ser528), His tagged

Cat. No. YARS-5224H Lot. No. (See product label)

### SPECIFICATION

<b>Product Overview</b>	Recombinant human YARS (Gly2-Ser528) fused with His tag was expressed in E. coli.
<b>Species</b>	Human
<b>Source</b>	E.coli
<b>ProteinLength</b>	Gly2-Ser528
<b>Description</b>	Catalyzes the attachment of tyrosine to tRNA (Tyr) in a two-step reaction: tyrosine is first activated by ATP to form Tyr-AMP and then transferred to the acceptor end of tRNA (Tyr) .
<b>Form</b>	Lyophilized powder/frozen liquid
<b>Molecular Mass</b>	58.04 kDa
<b>Purity</b>	>90% as determined by SDS-PAGE.
<b>Notes</b>	For research use only.
<b>Storage</b>	Use a manual defrost freezer and avoid repeated freeze thaw cycles. Store at 2 to 8 centigrade for one week. Store at -20 to -80 centigrade for twelve months from the date of receipt.

 Tel: 1-631-559-9269 1-516-512-3133

 Email: [info@creative-biomart.com](mailto:info@creative-biomart.com)  Fax: 1-631-938-8127

 45-1 Ramsey Road, Shirley, NY 11967, USA

<b>Storage Buffer</b>	Supplied as solution form in PBS, pH 7.5 or lyophilized from PBS, pH 7.5.
<b>Reconstitution</b>	Reconstitute in sterile water for a stock solution.
<b>Shipping</b>	They are shipped out with dry ice/blue ice unless customers require otherwise.

## GENE INFORMATION

<b>Gene Name</b>	YARS tyrosyl-tRNA synthetase [ Homo sapiens (human) ]
<b>Official Symbol</b>	YARS
<b>Synonyms</b>	YARS; tyrosyl-tRNA synthetase; tyrosine--tRNA ligase, cytoplasmic; tyrosine tRNA ligase 1; cytoplasmic; tyrRS; YRS; YTS; tyrosyl--tRNA ligase; tyrosine tRNA ligase 1, cytoplasmic; tyrosyl-tRNA synthetase, cytoplasmic; TYRRS; CMTDIC;
<b>Gene ID</b>	8565
<b>mRNA Refseq</b>	NM_003680
<b>Protein Refseq</b>	NP_003671
<b>MIM</b>	603623
<b>UniProt ID</b>	P54577

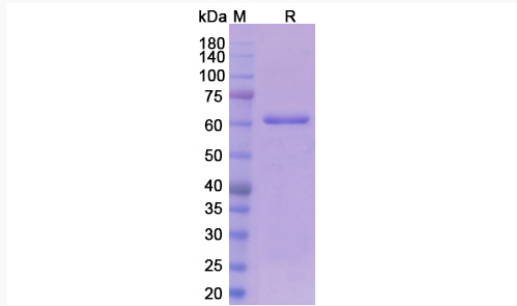
 Tel: 1-631-559-9269 1-516-512-3133

 Email: [info@creative-biomart.com](mailto:info@creative-biomart.com)  Fax: 1-631-938-8127

 45-1 Ramsey Road, Shirley, NY 11967, USA



SDS-PAGE



Tel: 1-631-559-9269 1-516-512-3133

Email: [info@creative-biomart.com](mailto:info@creative-biomart.com) Fax: 1-631-938-8127

45-1 Ramsey Road, Shirley, NY 11967, USA