

Recombinant Human YES proto oncogene 1, Src family tyrosine kinase Protein, His tagged

Cat. No. YES1-001H Lot. No. (See product label)

SPECIFICATION

Product Overview	Recombinant Human YES1 Protein with His tag was expressed in E. coli.
Species	Human
Source	E.coli
ProteinLength	1-88 aa
Description	This gene is the cellular homolog of the Yamaguchi sarcoma virus oncogene. The encoded protein has tyrosine kinase activity and belongs to the src family of proteins. This gene lies in close proximity to thymidylate synthase gene on chromosome 18, and a corresponding pseudogene has been found on chromosome 22.
Tag	C-His
Molecular Mass	10 kDa
AA Sequence	MGCIKSKENKSPAIKYRPENTPEPVSTSVSHYGAEPTTVSPCPSSSAKGTAVNFSSL SMTPFGGSSGVTPFGGASSSFVVPSSYPAGHHHHHHHH
Endotoxin	< 1 EU/μg by LAL
Purity	> 80% by SDS-PAGE

 Tel: 1-631-559-9269 1-516-512-3133

 Email: info@creative-biomart.com  Fax: 1-631-938-8127

 45-1 Ramsey Road, Shirley, NY 11967, USA

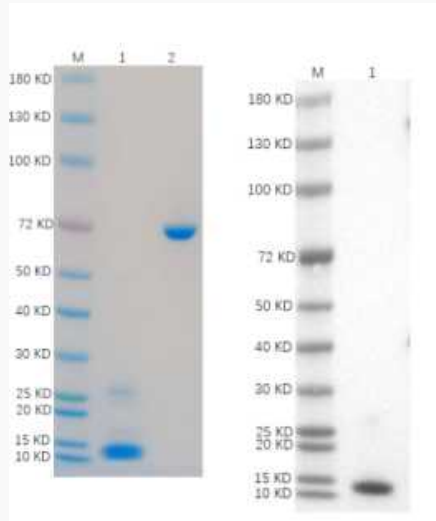
Storage	Store it under sterile conditions at -20 to -80 centigrade. It is recommended that the protein be aliquoted for optimal storage. Avoid repeated freeze-thaw cycles.
Storage Buffer	Sterile PBS, pH7.4
Concentration	0.8 mg/mL by BCA
GENE INFORMATION	
Gene Name	YES1 YES proto-oncogene 1, Src family tyrosine kinase [Homo sapiens (human)]
Official Symbol	YES1
Synonyms	YES1; v-yes-1 Yamaguchi sarcoma viral oncogene homolog 1; tyrosine-protein kinase Yes; c yes; HsT441; Yes; proto-oncogene c-Yes; cellular yes-1 protein; Yamaguchi sarcoma oncogene; proto-oncogene tyrosine-protein kinase YES; c-yes; P61-YES
Gene ID	7525
mRNA Refseq	NM_005433
Protein Refseq	NP_005424
MIM	164880
UniProt ID	P07947

 Tel: 1-631-559-9269 1-516-512-3133

 Email: info@creative-biomart.com  Fax: 1-631-938-8127

 45-1 Ramsey Road, Shirley, NY 11967, USA

**Reducing 4%-20%
SDS-PAGE (CBB
stained) and WB
(Anti-His Mouse
Monoclonal
antibody) analysis
profiles of purified
YES1.**



1. YES1: 1 μ g
2. BSA: 1 μ g

 Tel: 1-631-559-9269 1-516-512-3133

 Email: info@creative-biomart.com  Fax: 1-631-938-8127

 45-1 Ramsey Road, Shirley, NY 11967, USA