

Recombinant Full Length Human YES1 Protein, C-Flag-tagged

Cat. No. YES1-1102HFL Lot. No. (See product label)

SPECIFICATION

Product Overview	Recombinant Full Length Human YES1 Protein, fused to Flag-tag at C-terminus, was expressed in Mammalian cells.
Species	Human
Source	Mammalian Cells
Description	This gene is the cellular homolog of the Yamaguchi sarcoma virus oncogene. The encoded protein has tyrosine kinase activity and belongs to the src family of proteins. This gene lies in close proximity to thymidylate synthase gene on chromosome 18, and a corresponding pseudogene has been found on chromosome 22.
Form	25 mM Tris HCl, pH 7.3, 100 mM glycine, 10% glycerol.
Molecular Mass	60.6 kDa
AA Sequence	<p>MGCIKSKENKSPAICYRPEPNTPEPVSTSVSHYGAEPPTVSPCPSSSAKGTAVNFSSL SMTFFGGSSGVTP FGGASSSFSVVPSSYPAGLTGGVTIFVALYDYEARITTEDLSFK KGERFQIINTEGDWWEARSATGKNG YIPSNYVAPADSIQAEWYFGKMGRKDAE RLLLNPQNQRGIFLVRESETTKGAYSLSIRDWDEIRGDNVK HYKIRKLDNNGGYITTR AQFDTLQKLVKHYTEHADGLCHKLTTVCPTVKPQTQGLAKDAWEIPRESLRLE VKL GGGCFGEVWMTWNGTTKVAIKTLKPGTMMPEAFLQEAQIMKKLRHDKLVPLYAV VSEEPYIVTEF MSKGSLLDFLKEGDGKYLKLPQLVDMAAQIADGMAYIERMNYIHRD LRAANILVGENLVCKIADFGLARL IEDNEYTARQGAKFPIKWTAPEAALYGRFTIKSD VWSFGILQTELVTKGRVPYPGMVNREVLEQVERGYR</p>

 Tel: 1-631-559-9269 1-516-512-3133

 Email: info@creative-biomart.com  Fax: 1-631-938-8127

 45-1 Ramsey Road, Shirley, NY 11967, USA

MPCPQGCPESLHELMNLCWKKDPDERPTFEYIQSFLEDYFTATEPQYQPGENLTRTRPLEQKLISEEDLAANDILDYKDDDDKV

Purity	> 80% as determined by SDS-PAGE and Coomassie blue staining.
Stability	Stable for 12 months from the date of receipt of the product under proper storage and handling conditions. Avoid repeated freeze-thaw cycles.
Storage	Store at -80 centigrade.
Concentration	>50 ug/mL as determined by microplate BCA method.
Preparation	Recombinant protein was captured through anti-DDK affinity column followed by conventional chromatography steps.
Protein Families	Druggable Genome, Protein Kinase
Protein Pathways	Adherens junction, Tight junction
Full Length	Full L.

GENE INFORMATION

Gene Name	YES1 YES proto-oncogene 1, Src family tyrosine kinase [Homo sapiens (human)]
Official Symbol	YES1
Synonyms	Yes; c-yes; HsT441; P61-YES
Gene ID	7525

 Tel: 1-631-559-9269 1-516-512-3133

 Email: info@creative-biomart.com  Fax: 1-631-938-8127

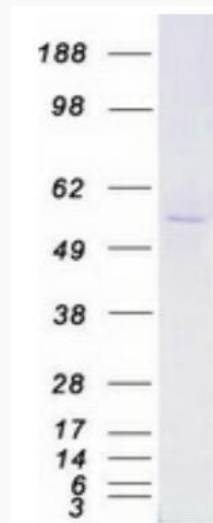
 45-1 Ramsey Road, Shirley, NY 11967, USA

mRNA Refseq [NM_005433.4](#)

Protein Refseq [NP_005424.1](#)

MIM [164880](#)

UniProt ID [P07947](#)



Coomassie blue staining of purified YES1 protein.

 Tel: 1-631-559-9269 1-516-512-3133

 Email: info@creative-biomart.com  Fax: 1-631-938-8127

 45-1 Ramsey Road, Shirley, NY 11967, USA