

Recombinant Full Length Human YTHDF1 Protein, C-Flag-tagged

Cat. No. YTHDF1-1236HFL **Lot. No.** (See product label)

SPECIFICATION

Product Overview	Recombinant Full Length Human YTHDF1 Protein, fused to Flag-tag at C-terminus, was expressed in Mammalian cells.
Species	Human
Source	Mammalian Cells
Description	Enables N6-methyladenosine-containing RNA binding activity and ribosome binding activity. Involved in mRNA destabilization; positive regulation of translational initiation; and stress granule assembly. Located in P-body and cytoplasmic stress granule.
Form	25 mM Tris HCl, pH 7.3, 100 mM glycine, 10% glycerol.
Molecular Mass	60.7 kDa
AA Sequence	<p>MSATSVDTRTKGQDNKVQNGSLHQKDTVHDNDFEPYLTGQSNQSNYSYPSMSDP YLSSYPPSIGFPYSL NEAPWSTAGDPPIPYLTTYGQLSNGDHHFMHDAVFGQPGG LGNNIYQHRFNFFPENPAFSAWGTSGSQGQ QTQSSAYGSSYTYPPSSLGGTVVDG QPGFHSDTLKAPGMNSLEQGMVGLKIGDVSSSAVKTVGSVSVSSV ALTGVLSGNG GTNVNMPVSKPTSWAAIASKPAKPQPKMKTSGPVMGGGLPPPIKHNM DIGTWD NKG PV PKAPVPQQAPSPQAAPQPQVAQPLPAQPPALAQPYQSPQQPPQTRW VAPRNRNAAFGQSGGAGSDSNS PGNVQPNAPSVEHPVLEKLKAAHSYNPKEFE WNLKSGRVFIKSYSEDDIHRSIKYSIWCSTEHG NKR LDSAFRCMSSKGPVYLLFSV NGSGHF CGVAEMKSPVDYGT SAGVWSQDKWKGFQVWIFVKDVPNNQLR HIRL</p>

 Tel: 1-631-559-9269 1-516-512-3133

 Email: info@creative-biomart.com  Fax: 1-631-938-8127

 45-1 Ramsey Road, Shirley, NY 11967, USA

ENNDNKPVTNSRDTQEVPLEKAKQVLKIISSYKHTTSIFDDFAHYEKRQEEEEVVRKE
RQSRNKQTRTRPQKLISEEDLAANDILDYKDDDDKV

Purity > 80% as determined by SDS-PAGE and Coomassie blue staining.

Stability Stable for 12 months from the date of receipt of the product under proper storage and handling conditions. Avoid repeated freeze-thaw cycles.

Storage Store at -80 centigrade.

Concentration >50 ug/mL as determined by microplate BCA method.

Preparation Recombinant protein was captured through anti-DDK affinity column followed by conventional chromatography steps.

Full Length Full L.

GENE INFORMATION

Gene Name YTHDF1 YTH N6-methyladenosine RNA binding protein 1 [Homo sapiens (human)]

Official Symbol YTHDF1

Synonyms DF1; C20orf21

Gene ID 54915

mRNA Refseq NM_017798.4

Protein Refseq NP_060268.2

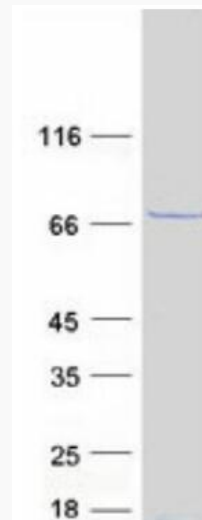
 Tel: 1-631-559-9269 1-516-512-3133

 Email: info@creative-biomart.com  Fax: 1-631-938-8127

 45-1 Ramsey Road, Shirley, NY 11967, USA

MIM 616529

UniProt ID Q9BYJ9



Coomassie blue staining of purified YTHDF1 protein.

 Tel: 1-631-559-9269 1-516-512-3133

 Email: info@creative-biomart.com  Fax: 1-631-938-8127

 45-1 Ramsey Road, Shirley, NY 11967, USA