

Recombinant Human YTHDF1 Protein, Myc/DDK-tagged, C13 and N15-labeled

Cat. No. YTHDF1-979H Lot. No. (See product label)

SPECIFICATION

Product Overview	YTHDF1 MS Standard C13 and N15-labeled recombinant protein (NP_060268) with a C-terminal MYC/DDK tag, was expressed in HEK293 cells.
Species	Human
Source	HEK293
Description	YTHDF1 (YTH N6-Methyladenosine RNA Binding Protein 1) is a Protein Coding gene. Diseases associated with YTHDF1 include Wilms Tumor 1. Gene Ontology (GO) annotations related to this gene include N6-methyladenosine-containing RNA binding. An important paralog of this gene is YTHDF3.
Molecular Mass	60.9 kDa
AA Sequence	MSATSVDTQRTKGQDNKVQNGSLHQKDTVHDNDFEPYLTGQSNQSNYSYPSMSDP YLSSYPPSIGFPYSLNEAPWSTAGDPPPIPYLTTYGQLSNGDHHFMHDAVFGQPGG LGNNIYQHRFNFFPENPAFSAWGTSGSQGQQTQSSAYGSSYTYPPSSLGGTVVDG QPGFHSDTLKAPGMNSLEQGMVGLKIGDVSSSAVKTVGSSVSSVALTGVLGNG GTNVNMPVSKPTSWAAIASKPAKPQPKMKTSGPVMGGGLPPPIKHNM DIGTWD NKGVPVKAPVPPQAPSPQAAPQPQQAQPLPAQPPALAQPPYQSPQQPPQTRWV APRNRNAAFGQSGGAGSDSNSPGNVQPNAPSVEHPVLEKLKAAHSYNPKEFEW NLKSGRVFIKSYSEDDIHRSIKYSIWCSTEHGNKRLDSAFRCMSSKGPVYLLFSVNG SGHFCGVAEMKSPVDYGTSAGVWSQDKWKGKFDVQWIFVKDVPNNQLRHIRLEN

Tel: 1-631-559-9269 1-516-512-3133

Email: info@creative-biomart.com Fax: 1-631-938-8127

45-1 Ramsey Road, Shirley, NY 11967, USA



NDNKPVTNSRDTQEVPLEKAKQVLKIISSYKHTTSIFDDFAHYEKRQEEEEVVRKER
QSRNKQTRTRPLEQKLISEEDLAANDILDYKDDDDKV

Purity > 80% as determined by SDS-PAGE and Coomassie blue staining

Stability Stable for 3 months from receipt of products under proper storage and handling conditions.

Storage Store at -80 centigrade. Avoid repeated freeze-thaw cycles.

Concentration 50 µg/mL as determined by BCA

Storage Buffer 100 mM glycine, 25 mM Tris-HCl, pH 7.3.

GENE INFORMATION

Gene Name YTHDF1 YTH N6-methyladenosine RNA binding protein 1 [Homo sapiens (human)]

Official Symbol YTHDF1

Synonyms YTHDF1; YTH domain family, member 1; C20orf21, YTH domain family 1; YTH domain family protein 1; FLJ20391; DACA-1; YTH domain family 1; dermatomyositis associated with cancer putative autoantigen 1; C20orf21;

Gene ID 54915

mRNA Refseq NM_017798

Protein Refseq NP_060268

MIM 616529

Tel: 1-631-559-9269 1-516-512-3133

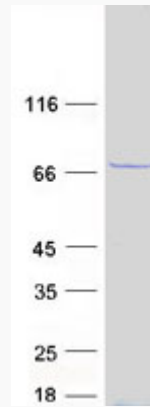
Email: info@creative-biomart.com Fax: 1-631-938-8127

45-1 Ramsey Road, Shirley, NY 11967, USA

UniProt ID

Q9BYJ9

SDS-PAGE



 Tel: 1-631-559-9269 1-516-512-3133

 Email: info@creative-biomart.com  Fax: 1-631-938-8127

 45-1 Ramsey Road, Shirley, NY 11967, USA