

Recombinant Human YWHAE Protein, His-tagged

Cat. No. YWHAE-137H Lot. No. (See product label)

SPECIFICATION

Product Overview	Recombinant Human YWHAE fused with His tag at N-terminal was expressed in Insect cells.
Species	Human
Source	Insect Cells
Description	14-3-3 epsilon also known as tyrosine 3-mono-oxygenase/tryptophan 5-monoxygenase activation protein is a member of the 14-3-3 family. 14-3-3 epsilon has been reported to be involved in heat shock transcription factor 1 (HSF1) and extracellular signal regulated protein kinase (ERK) pathways. 14-3-3 epsilon interaction with the deubiquitinating enzyme UBPY, also known as USP8, regulates cargo sorting and membrane traffic at early endosomes. Association of 14-3-3 epsilon, HSF1 with ERK during heat shock may modulate the amplitude of the response and control the termination of HSP expression on resumption of growth conditions.
Form	50mM sodium phosphate, pH 7.0, 300mM NaCl, 150mM imidazole, 0.1mM PMSF, 0.25mM DTT, 25% glycerol
Molecular Mass	30 kDa
Purity	> 95%
Applications	Western Blot

 Tel: 1-631-559-9269 1-516-512-3133

 Email: info@creative-biomart.com  Fax: 1-631-938-8127

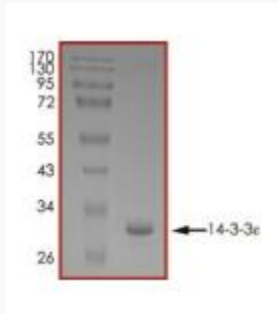
 45-1 Ramsey Road, Shirley, NY 11967, USA

Stability	1 year at -70 centigrade from date of shipment.
Storage	Store product at -70centigrade. For optimal storage, aliquot target into smaller quantities after centrifugation and store at recommended temperature. For most favorable performance, avoid repeated handling and multiple freeze/thaw cycles.
Concentration	0.2 ug/ml
GENE INFORMATION	
Gene Name	YWHAE tyrosine 3-monooxygenase/tryptophan 5-monooxygenase activation protein, epsilon polypeptide [Homo sapiens]
Official Symbol	YWHAE
Synonyms	YWHAE; tyrosine 3-monooxygenase/tryptophan 5-monooxygenase activation protein, epsilon polypeptide; 14-3-3 protein epsilon; 14 3 3 epsilon; FLJ45465; 14-3-3 epsilon; protein kinase C inhibitor protein-1; mitochondrial import stimulation factor L subunit; tyrosine 3/tryptophan 5 -monooxygenase activation protein, epsilon polypeptide; MDS; MDCR; KCIP-1; 14-3-3E; FLJ53559;
Gene ID	7531
mRNA Refseq	NM_006761
Protein Refseq	NP_006752
MIM	605066
UniProt ID	P62258

 Tel: 1-631-559-9269 1-516-512-3133

 Email: info@creative-biomart.com  Fax: 1-631-938-8127

 45-1 Ramsey Road, Shirley, NY 11967, USA



 Tel: 1-631-559-9269 1-516-512-3133

 Email: info@creative-biomart.com  Fax: 1-631-938-8127

 45-1 Ramsey Road, Shirley, NY 11967, USA