

Active Recombinant Full Length Human YWHAE Protein, C-Flag-tagged

Cat. No. YWHAE-237HFL **Lot. No.** (See product label)

SPECIFICATION

Product Overview	Recombinant Full Length Human YWHAE Protein, fused to Flag-tag at C-terminus, was expressed in Mammalian cells.
Species	Human
Source	Mammalian Cells
Description	This gene product belongs to the 14-3-3 family of proteins which mediate signal transduction by binding to phosphoserine-containing proteins. This highly conserved protein family is found in both plants and mammals, and this protein is 100% identical to the mouse ortholog. It interacts with CDC25 phosphatases, RAF1 and IRS1 proteins, suggesting its role in diverse biochemical activities related to signal transduction, such as cell division and regulation of insulin sensitivity. It has also been implicated in the pathogenesis of small cell lung cancer. Two transcript variants, one protein-coding and the other non-protein-coding, have been found for this gene.
Form	25 mM Tris HCl, pH 7.3, 100 mM glycine, 10% glycerol.
Bio-activity	In vitro ubiquitination assay (regulator) Co-immunoprecipitation
Molecular Mass	29 kDa
AA Sequence	MDDREDLVYQAKLAEQAERYDEMVESMKKVAGMDVELTVEERNLLSVAYKNVIGA

 Tel: 1-631-559-9269 1-516-512-3133

 Email: info@creative-biomart.com  Fax: 1-631-938-8127

 45-1 Ramsey Road, Shirley, NY 11967, USA

RRASWRIISSIEQKE ENKGGEDKMKMIREYRQMVETELKLICCDILDVLDKHLIPAANT
 GESKVFYYKMKGDYHRYLAEFATGND RKEAAENSLVAYKAASDIAMTELPPTHPIRL
 GLALNFSVFYYEILNSPDRACRLAKAAFDDAIAELDTLSEESYKDSTLIMQLLRDNLTL
 WTSDMQGDGEEQNKEALQDVEDENQ TRTRPLEQKLISEEDLAANDILDYKDDDDK
 V

Purity > 80% as determined by SDS-PAGE and Coomassie blue staining.

Stability Stable for 12 months from the date of receipt of the product under proper storage and handling conditions. Avoid repeated freeze-thaw cycles.

Storage Store at -80 centigrade.

Concentration >50 ug/mL as determined by microplate BCA method.

Preparation Recombinant protein was captured through anti-DDK affinity column followed by conventional chromatography steps.

Protein Families Druggable Genome

Protein Pathways Cell cycle, Neurotrophin signaling pathway, Oocyte meiosis

Full Length Full L.

GENE INFORMATION

Gene Name YWHAE tyrosine 3-monooxygenase/tryptophan 5-monooxygenase activation protein epsilon [Homo sapiens (human)]

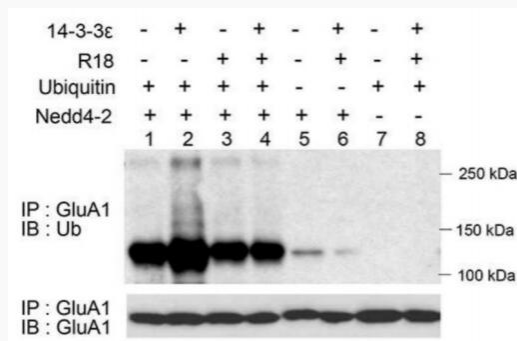
Official Symbol YWHAE

 Tel: 1-631-559-9269 1-516-512-3133

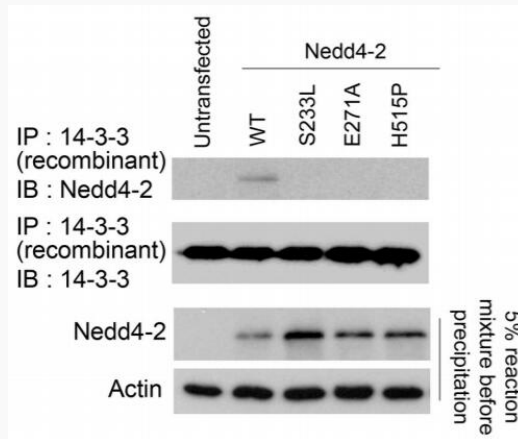
 Email: info@creative-biomart.com  Fax: 1-631-938-8127

 45-1 Ramsey Road, Shirley, NY 11967, USA

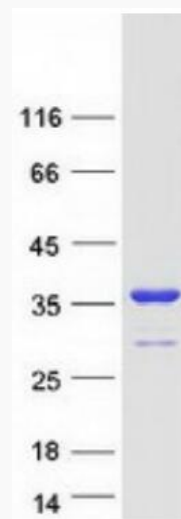
Synonyms	MDS; HEL2; MDCR; KCIP-1; 14-3-3E
Gene ID	7531
mRNA Refseq	NM_006761.5
Protein Refseq	NP_006752.1
MIM	605066
UniProt ID	P62258



Protein 14-3-3e enhances the ubiquitination of GluA1 by Nedd4-2. Samples from in vitro ubiquitination with recombinant GluA1 and Nedd4-2 in the presence or absence of recombinant 14-3-3e, 14-3-3e inhibitor R18, or ubiquitin were immunoprecipitated with an anti-GluA1 antibody and analyzed in Western blots with Ub or GluA1 antibodies.




Three epilepsy-associated missense mutations (S233L, E271A, H515P) of Nedd4-2 reduce the interaction between Nedd4-2 and 14-3-3e. Cell lysates prepared from HEK cells transfected with WT or mutant Nedd4-2s for 48 hours were incubated with recombinant 14-3-3e to pull down Nedd4-2, and the pulldown mixtures were analyzed in Western blots with Nedd4-2 and 14-3-3 (pan) antibodies. Right before the washing, 5% of the pulldown mixtures served as input controls shown on the bottom.






Coomassie blue staining of purified YWHAE protein.

 Tel: 1-631-559-9269 1-516-512-3133

 Email: info@creative-biomart.com  Fax: 1-631-938-8127

 45-1 Ramsey Road, Shirley, NY 11967, USA