

Recombinant Human YWHAG , His-tagged

Cat. No. YWHAG-100H Lot. No. (See product label)

SPECIFICATION

Product Overview Recombinant Human 14-3-3 gamma comprises a 246 amino acid fragment (2-247) corresponding to the 14-3-3 gamma coding sequence and is expressed in E. coli with an amino-terminal hexahistidine tag.

Species Human

Source E.coli

Protein Length 2-247 a.a.

Description 14-3-3 is a general name given to a family of acidic, soluble, ubiquitously expressed 28kDa proteins that are the products of related but separate genes. They are considered isoforms and are named eta (η), gamma (γ), delta/zeta (δ/ξ), alpha/beta (α/β), theta/tau (θ/τ), sigma (σ) or epsilon (ϵ). Interactions are generally mediated by phosphorylation of specific binding sites in the target proteins.

Purity >95% by SDS-PAGE

Form Liquid

Storage Store at 4°C if entire vial will be used within 2-4 weeks. Store, frozen at -20°C for longer periods of time. Please avoid freeze thaw cycles.

GENE INFORMATION

 Tel: 1-631-559-9269 1-516-512-3133

 Email: info@creative-biomart.com  Fax: 1-631-938-8127

 45-1 Ramsey Road, Shirley, NY 11967, USA

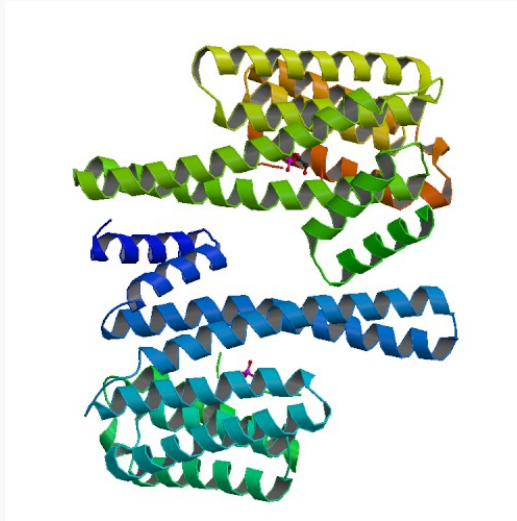
Gene Name	YWHAG tyrosine 3-monooxygenase/tryptophan 5-monooxygenase activation protein, gamma polypeptide [Homo sapiens]
Synonyms	14-3-3 protein gamma; Protein kinase C inhibitor protein 1; KCIP-1; YWHAG; Tyrosine 3-monooxygenase/tryptophan 5-monooxygenase activation protein; gamma polypeptide; MGC111427; MGC126532; MGC138156; OTTHUMP00000165851; OTTHUMP00000165852; OTTHUMP00000165854; OTTHUMP00000165858; OTTHUMP00000165859; OTTHUMP00000165860; 14-3-3 protein/cytosolic phospholipase A2; 14-3-3 zeta; phospholipase A2; tyrosine 3-monooxygenase/tryptophan 5-monooxygenase activation protein, zeta polypeptide; YWHAZ.
Gene ID	7532
mRNA Refseq	NM_012479
Protein Refseq	NP_036611
MIM	605356
UniProt ID	P61981
Chromosome Location	7q11.23
Pathway	Cell cycle; Cell Cycle, Mitotic
Function	insulin-like growth factor receptor binding; protein domain specific binding; protein kinase C binding; protein kinase C inhibitor activity

 Tel: 1-631-559-9269 1-516-512-3133

 Email: info@creative-biomart.com  Fax: 1-631-938-8127

 45-1 Ramsey Road, Shirley, NY 11967, USA

PDBrendering based
on 2b05. Available
structures:2b05



 Tel: 1-631-559-9269 1-516-512-3133

 Email: info@creative-biomart.com  Fax: 1-631-938-8127

 45-1 Ramsey Road, Shirley, NY 11967, USA