

Recombinant Human YWHAG

Cat. No. YWHAG-12H Lot. No. (See product label)

SPECIFICATION

Product Overview	Recombinant Human KCIP-1 produced in <i>E. Coli</i> is a single, non-glycosylated, polypeptide chain containing 247 amino acids (1-247) and having a molecular mass of 28 kDa. 14-3-3-gamma is purified by proprietary chromatographic techniques.
Species	Human
Source	E.coli
ProteinLength	1-247 a.a.
Description	The 14-3-3 family of proteins plays a key regulatory role in signal transduction, checkpoint control, apoptotic and nutrient-sensing pathways. 14-3-3 proteins are highly conserved and ubiquitously expressed. There are at least seven isoforms, β , γ , ϵ , σ , ζ , τ and η that have been identified in mammals. The 14-3-3gamma, a subtype of the 14-3-3 family of proteins, was thought to be brain and neuron-specific. It has been shown to interact with RAF1 and protein kinase C, proteins involved in various signal transduction pathways.
Amino Acid Sequence	MVDREQLVQK ARLAEQAERY DDMAAAMKNV TELNEPLSNE ERNLLSVAYK NVVGARRSSW RVISSIEQKT SADGNEKKIE MVRAYREKIE KELEAVCQDV LSLLDNYLIK NCSETQYESK VFYLMKMGDY YRYLAEVATG EKRA TVVESS EKAYSEAHEI SKEHMQPHTP IRLGLALNYS VFYYEIQNAP EQACHLAKTA FDDAIAELDT LNEDSYKDST LIMQLLRDNL TLWTSDQQDD DGGEGNN.
Physical Appearance	Sterile filtered colorless solution.

 Tel: 1-631-559-9269 1-516-512-3133

 Email: info@creative-biomart.com  Fax: 1-631-938-8127

 45-1 Ramsey Road, Shirley, NY 11967, USA

Purity	Greater than 95.0% as determined by: (a) Analysis by RP-HPLC. (b) Analysis by SDS-PAGE.
Formulation	1 mg/ml solution containing 20mM Tris 7.5.
Storage	Recombinant Human 14-3-3 Gamma although stable at 14°C for 1 week, should be stored desiccated below -18°C. Please prevent freeze thaw cycles.

GENE INFORMATION

Gene Name	YWHAG tyrosine 3-monooxygenase/tryptophan 5-monooxygenase activation protein, gamma polypeptide [Homo sapiens]
Synonyms	tyrosine 3-monooxygenase/tryptophan 5-monooxygenase activation protein, gamma polypeptide; 14-3-3GAMMA; YWHAG; 14-3-3 gamma; KCIP-1; Protein kinase C inhibitor protein 1
Gene ID	7532
mRNA Refseq	NM_012479
Protein Refseq	NP_036611
MIM	605356
UniProt ID	P61981
Chromosome Location	7q11.23
Pathway	Cell cycle; Cell Cycle, Mitotic; Neurotrophin signaling pathway

 Tel: 1-631-559-9269 1-516-512-3133

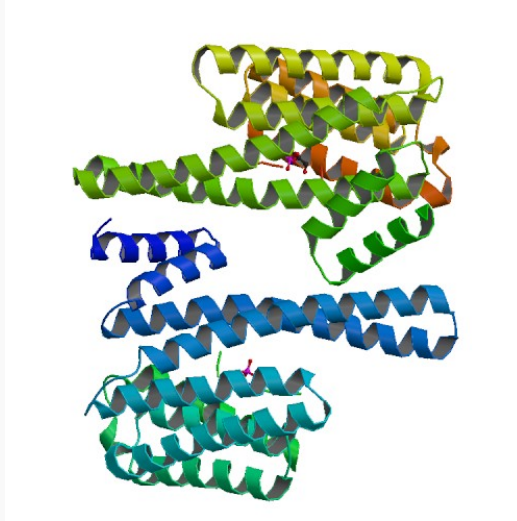
 Email: info@creative-biomart.com  Fax: 1-631-938-8127


 45-1 Ramsey Road, Shirley, NY 11967, USA

Function

insulin-like growth factor receptor binding; protein kinase C inhibitor activity; protein domain specific binding; protein kinase C binding

PDB rendering based on 2b05.



 Tel: 1-631-559-9269 1-516-512-3133

 Email: info@creative-biomart.com  Fax: 1-631-938-8127

 45-1 Ramsey Road, Shirley, NY 11967, USA