

# Recombinant Full Length Human YWHAG Protein, C-Flag-tagged

**Cat. No.** YWHAG-1387HFL    **Lot. No.** (See product label)

## SPECIFICATION

<b>Product Overview</b>	Recombinant Full Length Human YWHAG Protein, fused to Flag-tag at C-terminus, was expressed in Mammalian cells.
<b>Species</b>	Human
<b>Source</b>	Mammalian Cells
<b>Description</b>	This gene product belongs to the 14-3-3 family of proteins which mediate signal transduction by binding to phosphoserine-containing proteins. This highly conserved protein family is found in both plants and mammals, and this protein is 100% identical to the rat ortholog. It is induced by growth factors in human vascular smooth muscle cells, and is also highly expressed in skeletal and heart muscles, suggesting an important role for this protein in muscle tissue. It has been shown to interact with RAF1 and protein kinase C, proteins involved in various signal transduction pathways.
<b>Form</b>	25 mM Tris HCl, pH 7.3, 100 mM glycine, 10% glycerol.
<b>Molecular Mass</b>	28.1 kDa
<b>AA Sequence</b>	MVDREQLVQKARLAEQAERYDDMAAAMKNVTELNEPLSNEERNLLSVAYKNVVGARRSSWRVISSIEQKT SADGNEKKIEMVRAYREKIEKELEAVCQDVLSSLLDNYLIKNCSETQYESKVFYLMKMGDYRYLAEVATG EKRA TVVESSEKAYSEAHEISKEHMQPTHPIRLGLALNYSVFYIEIQNAPEQACHLAKTAFDDAIAELDT

 Tel: 1-631-559-9269    1-516-512-3133

 Email: [info@creative-biomart.com](mailto:info@creative-biomart.com)     Fax: 1-631-938-8127

 45-1 Ramsey Road, Shirley, NY 11967, USA

LNEDSYKDSTLIMQLLRDNLTLWTSDQQDDGGEGNN

**Purity** > 80% as determined by SDS-PAGE and Coomassie blue staining.

**Stability** Stable for 12 months from the date of receipt of the product under proper storage and handling conditions. Avoid repeated freeze-thaw cycles.

**Storage** Store at -80 centigrade.

**Concentration** >50 ug/mL as determined by microplate BCA method.

**Preparation** Recombinant protein was captured through anti-DDK affinity column followed by conventional chromatography steps.

**Protein Families** Druggable Genome

**Protein Pathways** Cell cycle, Neurotrophin signaling pathway, Oocyte meiosis

**Full Length** Full L.

## GENE INFORMATION

**Gene Name** YWHAG tyrosine 3-monooxygenase/tryptophan 5-monooxygenase activation protein gamma [ Homo sapiens (human) ]

**Official Symbol** YWHAG

**Synonyms** DEE56; EIEE56; PPP1R170; 14-3-3GAMMA

**Gene ID** 7532

 Tel: 1-631-559-9269 1-516-512-3133

 Email: [info@creative-biomart.com](mailto:info@creative-biomart.com)  Fax: 1-631-938-8127

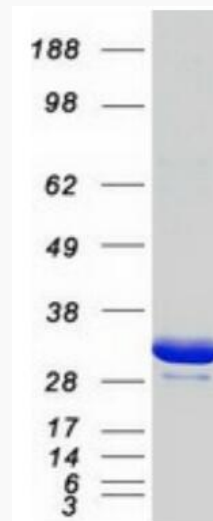
 45-1 Ramsey Road, Shirley, NY 11967, USA

mRNA Refseq [NM\\_012479.4](#)

Protein Refseq [NP\\_036611.2](#)

MIM [605356](#)

UniProt ID [P61981](#)



Coomassie blue staining of purified YWHAG protein.

 Tel: 1-631-559-9269 1-516-512-3133

 Email: [info@creative-biomart.com](mailto:info@creative-biomart.com)  Fax: 1-631-938-8127

 45-1 Ramsey Road, Shirley, NY 11967, USA