

## Recombinant Human YWHAG Protein

Cat. No. YWHAG-146H Lot. No. (See product label)

### SPECIFICATION

<b>Product Overview</b>	Recombinant Human YWHAG was expressed in E. coli.
<b>Species</b>	Human
<b>Source</b>	E.coli
<b>Description</b>	<p>14-3-3 gamma (also known as tyrosine 3-monooxygenase/tryptophan 5-monooxygenase activation protein, gamma polypeptide) is a member of the 14-3-3 family and is involved in mediating signal transduction by binding to phosphoserine-containing proteins. 14-3-3 gamma can interact with various signaling components including RAF1 and protein kinase C. Various growth factors can induce expression of 14-3-3 gamma in skeletal and heart muscles, suggesting an important role for this protein in muscle tissue. Upregulation of 14-3-3 gamma plays a specific protective role in astrocytes under ischemia. Elevation of 14-3-3 gamma protein in astrocytes promotes survival, while a decrease in 14-3-3 gamma enhances apoptosis in astrocytes under ischemia.</p>
<b>Form</b>	50mM sodium phosphate, pH 7.0, 300mM NaCl, 150mM imidazole, 0.1mM PMSF, 0.25mM DTT, 25% glycerol
<b>Molecular Mass</b>	29 kDa
<b>Purity</b>	> 85%
<b>Applications</b>	Western Blot

 Tel: 1-631-559-9269 1-516-512-3133

 Email: [info@creative-biomart.com](mailto:info@creative-biomart.com)  Fax: 1-631-938-8127

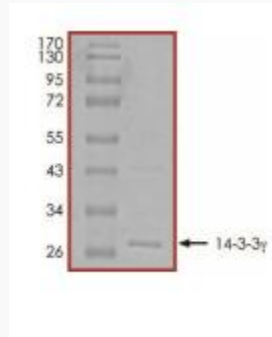
 45-1 Ramsey Road, Shirley, NY 11967, USA

<b>Stability</b>	1 year at -70 centigrade from date of shipment.
<b>Storage</b>	Store product at -70centigrade. For optimal storage, aliquot target into smaller quantities after centrifugation and store at recommended temperature. For most favorable performance, avoid repeated handling and multiple freeze/thaw cycles.
<b>Concentration</b>	0.2 ug/ml
<b>GENE INFORMATION</b>	
<b>Gene Name</b>	YWHAG tyrosine 3-monooxygenase/tryptophan 5-monooxygenase activation protein, gamma polypeptide [ Homo sapiens ]
<b>Official Symbol</b>	YWHAG
<b>Synonyms</b>	YWHAG; tyrosine 3-monooxygenase/tryptophan 5-monooxygenase activation protein, gamma polypeptide; 14-3-3 protein gamma; 14 3 3 gamma; KCIP-1; 14-3-3 gamma; protein kinase C inhibitor protein 1; 14-3-3GAMMA;
<b>Gene ID</b>	7532
<b>mRNA Refseq</b>	NM_012479
<b>Protein Refseq</b>	NP_036611
<b>MIM</b>	605356
<b>UniProt ID</b>	P61981

 Tel: 1-631-559-9269 1-516-512-3133

 Email: [info@creative-biomart.com](mailto:info@creative-biomart.com)  Fax: 1-631-938-8127

 45-1 Ramsey Road, Shirley, NY 11967, USA



 Tel: 1-631-559-9269 1-516-512-3133

 Email: [info@creative-biomart.com](mailto:info@creative-biomart.com)  Fax: 1-631-938-8127

 45-1 Ramsey Road, Shirley, NY 11967, USA