

## Recombinant Human YWHAH Protein

Cat. No. YWHAH-141H Lot. No. (See product label)

### SPECIFICATION

<b>Product Overview</b>	Recombinant Human YWHAH was expressed in E. coli.
<b>Species</b>	Human
<b>Source</b>	E.coli
<b>Description</b>	14-3-3 eta (also known as tyrosine 3-monooxygenase/ tryptophan 5-monooxygenase activation protein, eta polypeptide) plays a key role in tissue differentiation in neural development and in early mesenchyme. The 14-3-3 eta protein belongs to family of acidic proteins present exclusively in the brain and is believed to have a function in monoamine biosynthesis. 14-3-3 eta protein regulates human tyrosine hydroxylase type 1 (hTH1) stability by acting on the N-terminus. 14-3-3 eta can bind to parkin, which encodes an E3 ubiquitin-protein ligase, in the linker region and negatively regulate its ubiquitin ligase activity.
<b>Form</b>	50mM sodium phosphate, pH 7.0, 300mM NaCl, 150mM imidazole, 0.1mM PMSF, 0.25mM DTT, 25% glycerol
<b>Molecular Mass</b>	28 kDa
<b>Purity</b>	> 80%
<b>Applications</b>	Western Blot
<b>Stability</b>	1 year at -70 centigrade from date of shipment.

 Tel: 1-631-559-9269 1-516-512-3133

 Email: [info@creative-biomart.com](mailto:info@creative-biomart.com)  Fax: 1-631-938-8127

 45-1 Ramsey Road, Shirley, NY 11967, USA

**Storage** Store product at –70centigrade. For optimal storage, aliquot target into smaller quantities after centrifugation and store at recommended temperature. For most favorable performance, avoid repeated handling and multiple freeze/thaw cycles.

**Concentration** 0.2 ug/ml

## GENE INFORMATION

**Gene Name** YWHAH tyrosine 3-monooxygenase/tryptophan 5-monooxygenase activation protein, eta polypeptide [ Homo sapiens ]

**Official Symbol** YWHAH

**Synonyms** YWHAH; tyrosine 3-monooxygenase/tryptophan 5-monooxygenase activation protein, eta polypeptide; YWHA1; 14-3-3 protein eta; 14 3 3 eta; 14-3-3 eta;

**Gene ID** 7533

**mRNA Refseq** NM\_003405

**Protein Refseq** NP\_003396

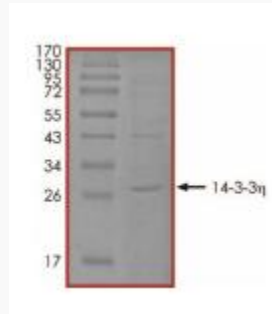
**MIM** 113508

**UniProt ID** Q04917

 Tel: 1-631-559-9269 1-516-512-3133

 Email: [info@creative-biomart.com](mailto:info@creative-biomart.com)  Fax: 1-631-938-8127

 45-1 Ramsey Road, Shirley, NY 11967, USA



 Tel: 1-631-559-9269 1-516-512-3133

 Email: [info@creative-biomart.com](mailto:info@creative-biomart.com)  Fax: 1-631-938-8127

 45-1 Ramsey Road, Shirley, NY 11967, USA