

Recombinant Human YWHAH Protein, GST-tagged

Cat. No. YWHAH-143H Lot. No. (See product label)

SPECIFICATION

Product Overview	Recombinant Human YWHAH fused with GST tag at N-terminal was expressed in Insect cells.
Species	Human
Source	E.coli
Description	14-3-3 eta (also known as tyrosine 3-monooxygenase/ tryptophan 5-monooxygenase activation protein, eta polypeptide) plays a key role in tissue differentiation in neural development and in early mesenchyme. The 14-3-3 eta protein belongs to family of acidic proteins present exclusively in the brain and is believed to have a function in monoamine biosynthesis. 14-3-3 eta protein regulates human tyrosine hydroxylase type 1 (hTH1) stability by acting on the N-terminus. 14-3-3 eta can bind to parkin, which encodes an E3 ubiquitin-protein ligase, in the linker region and negatively regulate its ubiquitin ligase activity.
Form	50mM sodium phosphate, pH 7.0, 300mM NaCl, 150mM imidazole, 0.1mM PMSF, 0.25mM DTT, 25% glycerol
Molecular Mass	55 kDa
Purity	> 95%
Applications	Western Blot

 Tel: 1-631-559-9269 1-516-512-3133

 Email: info@creative-biomart.com  Fax: 1-631-938-8127

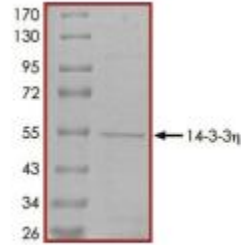
 45-1 Ramsey Road, Shirley, NY 11967, USA

Stability	1 year at -70 centigrade from date of shipment.
Storage	Store product at -70centigrade. For optimal storage, aliquot target into smaller quantities after centrifugation and store at recommended temperature. For most favorable performance, avoid repeated handling and multiple freeze/thaw cycles.
Concentration	0.2 ug/ml
GENE INFORMATION	
Gene Name	YWHAH tyrosine 3-monooxygenase/tryptophan 5-monooxygenase activation protein, eta polypeptide [Homo sapiens]
Official Symbol	YWHAH
Synonyms	YWHAH; tyrosine 3-monooxygenase/tryptophan 5-monooxygenase activation protein, eta polypeptide; YWHA1; 14-3-3 protein eta; 14 3 3 eta; 14-3-3 eta;
Gene ID	7533
mRNA Refseq	NM_003405
Protein Refseq	NP_003396
MIM	113508
UniProt ID	Q04917

 Tel: 1-631-559-9269 1-516-512-3133

 Email: info@creative-biomart.com  Fax: 1-631-938-8127

 45-1 Ramsey Road, Shirley, NY 11967, USA



Tel: 1-631-559-9269 1-516-512-3133

Email: info@creative-biomart.com Fax: 1-631-938-8127

45-1 Ramsey Road, Shirley, NY 11967, USA