

Recombinant Human YWHAH protein, GST-tagged

Cat. No. YWHAH-2562H Lot. No. (See product label)

SPECIFICATION

Product Overview	Recombinant Human YWHAH protein(Q04917) (Gly 2-Asn 246) was expressed in E. coli, fused with the GST tag at the N-terminus.
Species	Human
Source	E. coli
ProteinLength	2-246 aa
Form	Lyophilized from sterile 20mM Tris, 0.15M NaCl, 20mM GST, pH 8.0.
Molecular Mass	The recombinant human YWHAH/GST chimera consists of 476 amino acids and has a predicted molecular mass of 55 kDa as estimated in SDS-PAGE under reducing conditions.
Purity	> 90 % as determined by SDS-PAGE
Storage	Store it under sterile conditions at -20°C to -80°C upon receiving. Recommend to aliquot the protein into smaller quantities for optimal storage. Avoid repeated freeze-thaw cycles.
Reconstitution	It is recommended that sterile water be added to the vial to prepare a stock solution of 0.2 ug/ul. Centrifuge the vial at 4°C before opening to recover the entire contents.

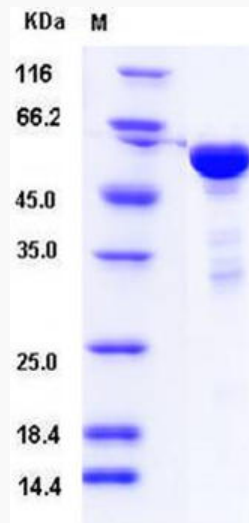
GENE INFORMATION

 Tel: 1-631-559-9269 1-516-512-3133

 Email: info@creative-biomart.com  Fax: 1-631-938-8127

 45-1 Ramsey Road, Shirley, NY 11967, USA

Gene Name	YWHAH tyrosine 3-monooxygenase/tryptophan 5-monooxygenase activation protein, eta polypeptide [Homo sapiens]
Official Symbol	YWHAH
Synonyms	YWHAH; tyrosine 3-monooxygenase/tryptophan 5-monooxygenase activation protein, eta polypeptide; YWHA1; 14-3-3 protein eta; 14 3 3 eta; 14-3-3 eta;
Gene ID	7533
mRNA Refseq	NM_003405
Protein Refseq	NP_003396
MIM	113508
UniProt ID	Q04917

SDS-PAGE


 Tel: 1-631-559-9269 1-516-512-3133

 Email: info@creative-biomart.com  Fax: 1-631-938-8127

 45-1 Ramsey Road, Shirley, NY 11967, USA