

Recombinant Human YWHAH protein, His-tagged

Cat. No. YWHAH-4250H Lot. No. (See product label)

SPECIFICATION

| | |
|-------------------------|---|
| Product Overview | Recombinant Human YWHAH protein(Q04917)(261aa), fused with N-terminal His tag, was expressed in E. coli. |
| Species | Human |
| Source | E.coli |
| Protein Length | 261aa(including fusion tag) |
| Tag | N-His |
| Form | 20mM Tris.Cl, 50mM NaCl, 50% Glycerol, pH8.0. |
| Molecular Mass | 30.1kDa(including fusion tag) |
| Storage | Store at -80°C and avoid repeated freeze-thaw cycles. |
| Reconstitution | It is recommended that sterile water be added to the vial to prepare a stock solution of 0.2 ug/ul. Centrifuge the vial at 4°C before opening to recover the entire contents. |

GENE INFORMATION

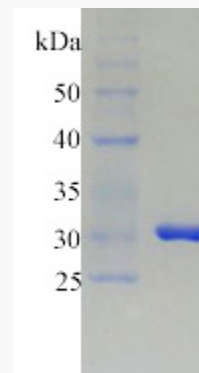
Gene Name YWHAH tyrosine 3-monooxygenase/tryptophan 5-monooxygenase activation protein, eta polypeptide [Homo sapiens]

 Tel: 1-631-559-9269 1-516-512-3133

 Email: info@creative-biomart.com  Fax: 1-631-938-8127

 45-1 Ramsey Road, Shirley, NY 11967, USA

| | |
|------------------------|--|
| Official Symbol | YWHAH |
| Synonyms | YWHAH; tyrosine 3-monooxygenase/tryptophan 5-monooxygenase activation protein, eta polypeptide; YWHA1; 14-3-3 protein eta; 14 3 3 eta; 14-3-3 eta; |
| Gene ID | 7533 |
| mRNA Refseq | NM_003405 |
| Protein Refseq | NP_003396 |
| MIM | 113508 |
| UniProt ID | Q04917 |

SDS-PAGE


 Tel: 1-631-559-9269 1-516-512-3133

 Email: info@creative-biomart.com  Fax: 1-631-938-8127

 45-1 Ramsey Road, Shirley, NY 11967, USA