

Recombinant Human YWHAH Protein, Myc/DDK-tagged, C13 and N15-labeled

Cat. No. YWHAH-871H Lot. No. (See product label)

SPECIFICATION

Product Overview	YWHAH MS Standard C13 and N15-labeled recombinant protein (NP_003396) with a C-terminal MYC/DDK tag, was expressed in HEK293 cells.
Species	Human
Source	HEK293
Description	This gene product belongs to the 14-3-3 family of proteins which mediate signal transduction by binding to phosphoserine-containing proteins. This highly conserved protein family is found in both plants and mammals, and this protein is 99% identical to the mouse, rat and bovine orthologs. This gene contains a 7 bp repeat sequence in its 5' UTR, and changes in the number of this repeat have been associated with early-onset schizophrenia and psychotic bipolar disorder.
Molecular Mass	28.2 kDa
AA Sequence	MGDREQLLQRARLAEQAERYDDMASAMKAVTELNEPLSNEDRNLLSVAYKNVVGARRSSWRVVISSIEQKTMADGNEKKLEKVKAYREKIEKELETVCNDVLSLLDKFLIKNCNDFQYESKVFYLMKMGDYRYLAEVASGEKKNVVEASEAAYKEAFEISKEQMMPHPIRLGLALNFSVFYYEIQNAPEQACLLAKQAFDDAIAELDTLNEDSYKDSTLIMQLLRDNLTLWTSDQQDEEAGEGNTRTRPLEQKLISEEDLAANDILDYKDDDDKV
Purity	> 80% as determined by SDS-PAGE and Coomassie blue staining

 Tel: 1-631-559-9269 1-516-512-3133

 Email: info@creative-biomart.com  Fax: 1-631-938-8127

 45-1 Ramsey Road, Shirley, NY 11967, USA

Stability	Stable for 3 months from receipt of products under proper storage and handling conditions.
Storage	Store at -80 centigrade. Avoid repeated freeze-thaw cycles.
Concentration	50 µg/mL as determined by BCA
Storage Buffer	100 mM glycine, 25 mM Tris-HCl, pH 7.3.

GENE INFORMATION

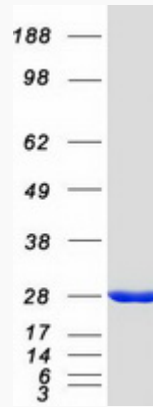
Gene Name	YWHAH tyrosine 3-monooxygenase/tryptophan 5-monooxygenase activation protein eta [Homo sapiens (human)]
Official Symbol	YWHAH
Synonyms	YWHAH; tyrosine 3-monooxygenase/tryptophan 5-monooxygenase activation protein, eta polypeptide; YWHA1; 14-3-3 protein eta; 14 3 3 eta; 14-3-3 eta;
Gene ID	7533
mRNA Refseq	NM_003405
Protein Refseq	NP_003396
MIM	113508
UniProt ID	Q04917

 Tel: 1-631-559-9269 1-516-512-3133

 Email: info@creative-biomart.com  Fax: 1-631-938-8127

 45-1 Ramsey Road, Shirley, NY 11967, USA

SDS-PAGE



 Tel: 1-631-559-9269 1-516-512-3133

 Email: info@creative-biomart.com  Fax: 1-631-938-8127

 45-1 Ramsey Road, Shirley, NY 11967, USA