

Recombinant Full Length Human YWHAH Protein, C-Flag-tagged

Cat. No. YWHAH-922HFL **Lot. No.** (See product label)

SPECIFICATION

Product Overview

Recombinant Full Length Human YWHAH Protein, fused to Flag-tag at C-terminus, was expressed in Mammalian cells.

Species

Human

Source

Mammalian Cells

Description

This gene product belongs to the 14-3-3 family of proteins which mediate signal transduction by binding to phosphoserine-containing proteins. This highly conserved protein family is found in both plants and mammals, and this protein is 99% identical to the mouse, rat and bovine orthologs. This gene contains a 7 bp repeat sequence in its 5' UTR, and changes in the number of this repeat have been associated with early-onset schizophrenia and psychotic bipolar disorder.

Form

25 mM Tris HCl, pH 7.3, 100 mM glycine, 10% glycerol.

Molecular Mass


28 kDa

AA Sequence

MGDREQLLQRRARLAEQAERYDDMASAMKAVTELNEPLSNEDRNLLSVAYKNVVGARRSSWRVISSIEQKT MADGNEKKLEKVKAYREKIEKELETVCNDVLSLLDKFLIKNCNDFQYESKVFYLMKMGDYRYLAEVASG EKKNSVVEASEAAYKEAFEISKEQMOPHPIRLGLALNFSVFYIEIQNAPEQAACLLAKQAFDDAIAELDT
LNEDSYKDSTLIMQLLRDNLTLWTSQQDEEAGEGNTRTRPLEQKLISEEDLAANDILDYKDDDDKV

 Tel: 1-631-559-9269 1-516-512-3133

 Email: info@creative-biomart.com  Fax: 1-631-938-8127

 45-1 Ramsey Road, Shirley, NY 11967, USA

Purity	> 80% as determined by SDS-PAGE and Coomassie blue staining.
Stability	Stable for 12 months from the date of receipt of the product under proper storage and handling conditions. Avoid repeated freeze-thaw cycles.
Storage	Store at -80 centigrade.
Concentration	>50 ug/mL as determined by microplate BCA method.
Preparation	Recombinant protein was captured through anti-DDK affinity column followed by conventional chromatography steps.
Protein Families	Druggable Genome, Transcription Factors
Protein Pathways	Cell cycle, Neurotrophin signaling pathway, Oocyte meiosis
Full Length	Full L.

GENE INFORMATION

Gene Name	YWHAH tyrosine 3-monooxygenase/tryptophan 5-monooxygenase activation protein eta [Homo sapiens (human)]
Official Symbol	YWHAH
Synonyms	YWHA1
Gene ID	7533
mRNA Refseq	NM_003405.4

 Tel: 1-631-559-9269 1-516-512-3133

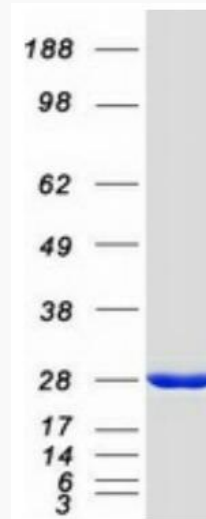
 Email: info@creative-biomart.com  Fax: 1-631-938-8127

 45-1 Ramsey Road, Shirley, NY 11967, USA

Protein Refseq NP_003396.1

MIM 113508

UniProt ID Q04917



Coomassie blue staining of purified YWHAH protein.

 Tel: 1-631-559-9269 1-516-512-3133

 Email: info@creative-biomart.com  Fax: 1-631-938-8127

 45-1 Ramsey Road, Shirley, NY 11967, USA