

# Recombinant Human YWHAQ Protein, Myc/DDK-tagged, C13 and N15-labeled

**Cat. No.** YWHAQ-4572H    **Lot. No.** (See product label)

## SPECIFICATION

<b>Product Overview</b>	YWHAQ MS Standard C13 and N15-labeled recombinant protein (NP_006817) with a C-terminal MYC/DDK tag, was expressed in HEK293 cells.
<b>Species</b>	Human
<b>Source</b>	HEK293
<b>Description</b>	This gene product belongs to the 14-3-3 family of proteins which mediate signal transduction by binding to phosphoserine-containing proteins. This highly conserved protein family is found in both plants and mammals, and this protein is 99% identical to the mouse and rat orthologs. This gene is upregulated in patients with amyotrophic lateral sclerosis. It contains in its 5' UTR a 6 bp tandem repeat sequence which is polymorphic, however, there is no correlation between the repeat number and the disease.
<b>Molecular Mass</b>	27.8 kDa
<b>AA Sequence</b>	MEKTELIQKAKLAEQAERYDDMATCMKAVTEQGAELSNEERNLLSVAYKNVVGRR SAWRVISSIEQKTDTSKLLQLIKDYREKVESELRSICTTVLELLDKYLIANATNPESK VFYLMKMGDYFRYLAEVACGDDRKQTIDNSQGAYQEAFDISKKEMQPHTPIRLGLAL NFSVFYYEILNNPELACTLAKTAFDEAIAELDTLNEDSYKDSTLIMQLLRDNLTLWTSD SAGEECDAAEGAENTRTRPLEQKLISEEDLAANDILDYKDDDDKV
<b>Purity</b>	> 80% as determined by SDS-PAGE and Coomassie blue staining

 Tel: 1-631-559-9269    1-516-512-3133

 Email: [info@creative-biomart.com](mailto:info@creative-biomart.com)     Fax: 1-631-938-8127

 45-1 Ramsey Road, Shirley, NY 11967, USA

<b>Stability</b>	Stable for 3 months from receipt of products under proper storage and handling conditions.
<b>Storage</b>	Store at -80 centigrade. Avoid repeated freeze-thaw cycles.
<b>Concentration</b>	50 µg/mL as determined by BCA
<b>Storage Buffer</b>	100 mM glycine, 25 mM Tris-HCl, pH 7.3.

## GENE INFORMATION

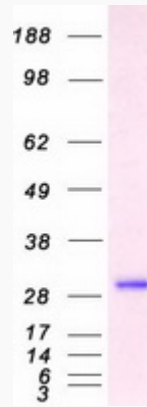
<b>Gene Name</b>	YWHAQ tyrosine 3-monooxygenase/tryptophan 5-monooxygenase activation protein theta [ Homo sapiens (human) ]
<b>Official Symbol</b>	YWHAQ
<b>Synonyms</b>	YWHAQ; tyrosine 3-monooxygenase/tryptophan 5-monooxygenase activation protein, theta polypeptide; 14-3-3 protein theta; 14 3 3; HS1; protein tau; 14-3-3 protein tau; 14-3-3 protein T-cell; 1C5; 14-3-3;
<b>Gene ID</b>	10971
<b>mRNA Refseq</b>	NM_006826
<b>Protein Refseq</b>	NP_006817
<b>MIM</b>	609009
<b>UniProt ID</b>	P27348

 Tel: 1-631-559-9269 1-516-512-3133

 Email: [info@creative-biomart.com](mailto:info@creative-biomart.com)  Fax: 1-631-938-8127

 45-1 Ramsey Road, Shirley, NY 11967, USA

SDS-PAGE



 Tel: 1-631-559-9269 1-516-512-3133

 Email: [info@creative-biomart.com](mailto:info@creative-biomart.com)  Fax: 1-631-938-8127

 45-1 Ramsey Road, Shirley, NY 11967, USA