

## Recombinant Human YWHAZ Protein (Met1-Asn245), N-His tagged

Cat. No. YWHAZ-6580H Lot. No. (See product label)

### SPECIFICATION

<b>Product Overview</b>	Recombinant human YWHAZ (Met1-Asn245) fused with the N-His tag was expressed in E. coli.
<b>Species</b>	Human
<b>Source</b>	E.coli
<b>ProteinLength</b>	Met1-Asn245
<b>Form</b>	Lyophilized powder/frozen liquid
<b>Molecular Mass</b>	30.05 kDa
<b>Purity</b>	> 90 % as determined by SDS-PAGE
<b>Notes</b>	For research use only.
<b>Storage</b>	Use a manual defrost freezer and avoid repeated freeze thaw cycles. Store at 2 to 8 centigrade for one week. Store at -20 to -80 centigrade for twelve months from the date of receipt.
<b>Storage Buffer</b>	0.01M PBS, pH 7.4, 0.02 % NLS
<b>Reconstitution</b>	Reconstitute in sterile water for a stock solution.

 Tel: 1-631-559-9269 1-516-512-3133

 Email: [info@creative-biomart.com](mailto:info@creative-biomart.com)  Fax: 1-631-938-8127

 45-1 Ramsey Road, Shirley, NY 11967, USA

**Shipping** They are shipped out with dry ice/blue ice unless customers require otherwise.

## GENE INFORMATION

<b>Gene Name</b>	YWHAZ tyrosine 3-monooxygenase/tryptophan 5-monooxygenase activation protein zeta [ Homo sapiens (human) ]
<b>Official Symbol</b>	YWHAZ
<b>Synonyms</b>	YWHAZ; tyrosine 3-monooxygenase/tryptophan 5-monooxygenase activation protein, zeta polypeptide; tyrosine 3 monooxygenase/tryptophan 5 monooxygenase activation protein, delta polypeptide, YWHAD; 14-3-3 protein zeta/delta; 14 3 3 delta; 14 3 3 zeta; KCIP 1; 14-3-3 zeta; 14-3-3 delta; phospholipase A2; protein kinase C inhibitor protein 1; protein kinase C inhibitor protein-1; 14-3-3 protein/cytosolic phospholipase A2; tyrosine 3/tryptophan 5 -monooxygenase activation protein, zeta polypeptide; tyrosine 3-monooxygenase/tryptophan 5-monooxygenase activation protein, delta polypeptide; YWHAD; KCIP-1; 14-3-3-zeta; MGC111427; MGC126532; MGC138156;
<b>Gene ID</b>	7534
<b>mRNA Refseq</b>	NM_001135699
<b>Protein Refseq</b>	NP_001129171
<b>MIM</b>	601288
<b>UniProt ID</b>	P63104

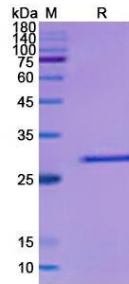
 Tel: 1-631-559-9269 1-516-512-3133

 Email: [info@creative-biomart.com](mailto:info@creative-biomart.com)  Fax: 1-631-938-8127

 45-1 Ramsey Road, Shirley, NY 11967, USA



SDS-PAGE



Tel: 1-631-559-9269 1-516-512-3133

Email: [info@creative-biomart.com](mailto:info@creative-biomart.com) Fax: 1-631-938-8127

45-1 Ramsey Road, Shirley, NY 11967, USA