

## Recombinant Mouse Ywhah Protein, His-tagged

Cat. No. Ywhah-140M    Lot. No. (See product label)

### SPECIFICATION

<b>Product Overview</b>	Recombinant Mouse Ywhah fused with His tag at N-terminal was expressed in Insect cells.
<b>Species</b>	Mouse
<b>Source</b>	Insect Cells
<b>Description</b>	14-3-3 eta (also known as tyrosine 3-monooxygenase/ tryptophan 5-monooxygenase activation protein, eta polypeptide) plays a key role in tissue differentiation in neural development and in early mesenchyme. The 14-3-3 eta protein belongs to family of acidic proteins present exclusively in the brain and is believed to have a function in monoamine biosynthesis. 14-3-3 eta protein regulates human tyrosine hydroxylase type 1 (hTH1) stability by acting on the N-terminus. 14-3-3 eta can bind to parkin, which encodes an E3 ubiquitin-protein ligase, in the linker region and negatively regulate its ubiquitin ligase activity.
<b>Form</b>	50mM sodium phosphate, pH 7.0, 300mM NaCl, 150mM imidazole, 0.1mM PMSF, 0.25mM DTT, 25% glycerol
<b>Molecular Mass</b>	33 kDa
<b>Purity</b>	> 95%
<b>Applications</b>	Western Blot

 Tel: 1-631-559-9269    1-516-512-3133

 Email: [info@creative-biomart.com](mailto:info@creative-biomart.com)     Fax: 1-631-938-8127

 45-1 Ramsey Road, Shirley, NY 11967, USA

<b>Stability</b>	1 year at -70 centigrade from date of shipment.
<b>Storage</b>	Store product at -70centigrade. For optimal storage, aliquot target into smaller quantities after centrifugation and store at recommended temperature. For most favorable performance, avoid repeated handling and multiple freeze/thaw cycles.
<b>Concentration</b>	1 ug/ml

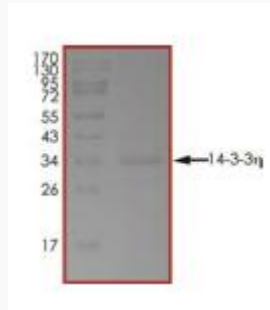
## GENE INFORMATION

<b>Gene Name</b>	Ywhah tyrosine 3-monooxygenase/tryptophan 5-monooxygenase activation protein, eta polypeptide [ <i>Mus musculus</i> ]
<b>Official Symbol</b>	Ywhah
<b>Synonyms</b>	YWHAH; tyrosine 3-monooxygenase/tryptophan 5-monooxygenase activation protein, eta polypeptide; 14-3-3 protein eta; 14-3-3 eta;
<b>Gene ID</b>	22629
<b>mRNA Refseq</b>	NM_011738
<b>Protein Refseq</b>	NP_035868
<b>UniProt ID</b>	P68510

 Tel: 1-631-559-9269 1-516-512-3133

 Email: [info@creative-biomart.com](mailto:info@creative-biomart.com)  Fax: 1-631-938-8127

 45-1 Ramsey Road, Shirley, NY 11967, USA



 Tel: 1-631-559-9269 1-516-512-3133

 Email: [info@creative-biomart.com](mailto:info@creative-biomart.com)  Fax: 1-631-938-8127

 45-1 Ramsey Road, Shirley, NY 11967, USA