

Recombinant Human ZBED1 Protein (1-210 aa), GST-tagged

Cat. No. ZBED1-1191H Lot. No. (See product label)

SPECIFICATION

Product Overview	Recombinant Human ZBED1 Protein (1-210 aa) is produced by E. coli expression system. This protein is fused with a GST tag at the N-terminal. Research Area: Epigenetics and Nuclear Signaling. Protein Description: Partial.
Species	Human
Source	E.coli
ProteinLength	1-210 aa
Description	Binds to 5'-TGTCG[CT]GA[CT]A-3' DNA elents found in the promoter regions of a number of genes related to cell proliferation. Binds to the histone H1 promoter and stimulates transcription. Was first identified as gene weakly similar to Ac transposable elents, but does not code for any transposase activity.
Form	Tris-based buffer,50% glycerol
Molecular Mass	50.8 kDa
AA Sequence	MENKSLESSQTDLKLVAHPRAKSKVWKYFGFDTNAEGCILQWKKIYCRICMAQIAYS GNTSNLSYHLEKNHPEEFCEVKSNTQMREAFATAFASKLKPESSQQPGQDALAVK AGHGYDSKKQQELTAAVLGLICEGLYPASIVDEPTFKVLLKTADPRYELPSRKYISTK AIPEKYGAVREVILKELAEATWCGISTDMWRSENQNRAY
Purity	> 90% as determined by SDS-PAGE.

 Tel: 1-631-559-9269 1-516-512-3133

 Email: info@creative-biomart.com  Fax: 1-631-938-8127

 45-1 Ramsey Road, Shirley, NY 11967, USA

Notes	Repeated freezing and thawing is not recommended. Store working aliquots at 4 centigrade for up to one week.
Storage	The shelf life is related to many factors, storage state, buffer ingredients, storage temperature and the stability of the protein itself. Generally, the shelf life of liquid form is 6 months at -20 centigrade/-80 centigrade. The shelf life of lyophilized form is 12 months at -20 centigrade/-80 centigrade.
Concentration	A hardcopy of COA with reconstitution instruction is sent along with the products. Please refer to it for detailed information.

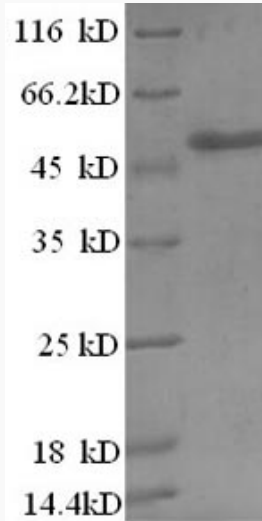
GENE INFORMATION

Gene Name	ZBED1 zinc finger, BED-type containing 1 [Homo sapiens]
Official Symbol	ZBED1
Synonyms	ZBED1; DREF; hDREF; KIAA0785; TRAMP; dREF homolog; ALTE;
Gene ID	9189
mRNA Refseq	NM_001171135
Protein Refseq	NP_001164606
MIM	300178
UniProt ID	O96006

 Tel: 1-631-559-9269 1-516-512-3133

 Email: info@creative-biomart.com  Fax: 1-631-938-8127

 45-1 Ramsey Road, Shirley, NY 11967, USA



(Tris-Glycine gel) Discontinuous SDS-PAGE (reduced) with 5% enrichment gel and 15% separation gel.

 Tel: 1-631-559-9269 1-516-512-3133

 Email: info@creative-biomart.com  Fax: 1-631-938-8127

 45-1 Ramsey Road, Shirley, NY 11967, USA