

Recombinant Human ZBP1 protein, His-tagged

Cat. No. ZBP1-897H Lot. No. (See product label)

SPECIFICATION

| | |
|-------------------------|---|
| Product Overview | Recombinant Human ZBP1 protein(Q9H171)(Met1-Ser149), fused with His tag, was expressed in E. coli. |
| Species | Human |
| Source | E.coli |
| ProteinLength | Met1-Ser149 |
| Form | Lyophilized from a 0.2 µm filtered solution of PBS, pH 7.4. |
| Molecular Mass | 16-23 KDa |
| Endotoxin | Less than 0.1 ng/g (1 EU/g) as determined by LAL test. |
| Purity | Greater than 90% as determined by reducing SDS-PAGE. |
| Storage | Lyophilized protein should be stored at ≤ -20°C, stable for one year after receipt. Reconstituted protein solution can be stored at 2-8°C for 2-7 days. Aliquots of reconstituted samples are stable at ≤ -20°C for 3 months. |
| Reconstitution | Always centrifuge tubes before opening. Do not mix by vortex or pipetting. It is not recommended to reconstitute to a concentration less than 100µg/ml. Dissolve the lyophilized protein in distilled water. Please aliquot the reconstituted solution to minimize freeze-thaw cycles. |

 Tel: 1-631-559-9269 1-516-512-3133

 Email: info@creative-biomart.com  Fax: 1-631-938-8127

 45-1 Ramsey Road, Shirley, NY 11967, USA

GENE INFORMATION

Gene Name ZBP1 Z-DNA binding protein 1 [Homo sapiens]

Official Symbol ZBP1

Synonyms ZBP1; Z-DNA binding protein 1; C20orf183, chromosome 20 open reading frame 183; Z-DNA-binding protein 1; DAI; dJ718J7.3; DLM 1; DLM1; DNA dependent activator of IRFs; DNA-dependent activator of IRFs; DNA-dependent activator of IFN-regulatory factors; tumor stroma and activated macrophage protein DLM-1; DNA-dependent activator of interferon regulatory factors; DLM-1; C20orf183;

Gene ID 81030

mRNA Refseq NM_001160417

Protein Refseq NP_001153889

MIM 606750

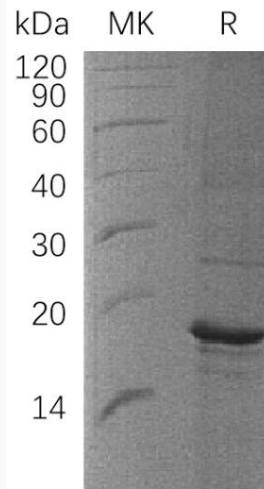
UniProt ID Q9H171

 Tel: 1-631-559-9269 1-516-512-3133

 Email: info@creative-biomart.com  Fax: 1-631-938-8127

 45-1 Ramsey Road, Shirley, NY 11967, USA

SDS-PAGE



 Tel: 1-631-559-9269 1-516-512-3133

 Email: info@creative-biomart.com  Fax: 1-631-938-8127

 45-1 Ramsey Road, Shirley, NY 11967, USA