

Recombinant Human ZBTB16 Protein, His tagged

Cat. No. ZBTB16-001H Lot. No. (See product label)

SPECIFICATION

Product Overview	Recombinant human zinc finger and BTB domain containing 16 Protein (1-254aa) with N His tag was expressed in E. coli.
Species	Human
Source	E.coli
ProteinLength	1-254aa
Description	This gene is a member of the Krueppel C2H2-type zinc-finger protein family and encodes a zinc finger transcription factor that contains nine Kruppel-type zinc finger domains at the carboxyl terminus. This protein is located in the nucleus, is involved in cell cycle progression, and interacts with a histone deacetylase. Specific instances of aberrant gene rearrangement at this locus have been associated with acute promyelocytic leukemia (APL). Alternate transcriptional splice variants have been characterized.
Tag	N-His
Molecular Mass	28.6 kDa
AA Sequence	MHHHHHDLTKMGMIIQLQNPSHPTGLLCKANQMRLAGTLCDDVIMVDSQEFHAHR TVLACTSKMFEILFHRNSQHYTLDFLSPKTFQQILEYAYTATLQAKAEDLDDLLYAAEI LEIEYLEEQCLKMLETIQASDDNDTEATMADGGAEEDRKYRNLKKNIFISKHSSEES GYASVAGQSLPGPMVDQSPSVSTSFGLSAMSPTKAAVDSLMTIGQSLLQGTLQPPA

 Tel: 1-631-559-9269 1-516-512-3133

 Email: info@creative-biomart.com  Fax: 1-631-938-8127

 45-1 Ramsey Road, Shirley, NY 11967, USA

GPEEPTLAGGGRHPGVAEVKTEMMQVDEVPSQ

Endotoxin < 0.1 EU/μg by LAL

Purity > 95% by SDS-PAGE

Storage Store it under sterile conditions at -20 to -80 centigrade. It is recommended that the protein be aliquoted for optimal storage. Avoid repeated freeze-thaw cycles.

Storage Buffer Sterile PBS, pH 7.4

Concentration 1.0 mg/mL

GENE INFORMATION

Gene Name ZBTB16 zinc finger and BTB domain containing 16 [Homo sapiens (human)]

Official Symbol ZBTB16

Synonyms ZBTB16; zinc finger and BTB domain containing 16; zinc finger protein 145 (Kruppel like, expressed in promyelocytic leukemia) , ZNF145; zinc finger and BTB domain-containing protein 16; PLZF; zinc finger protein PLZF; zinc finger protein 145 (Kruppel-like, expressed in promyelocytic leukemia); ZNF145;

Gene ID 7704

mRNA Refseq NM_001018011

Protein Refseq NP_001018011

MIM 176797

 Tel: 1-631-559-9269 1-516-512-3133

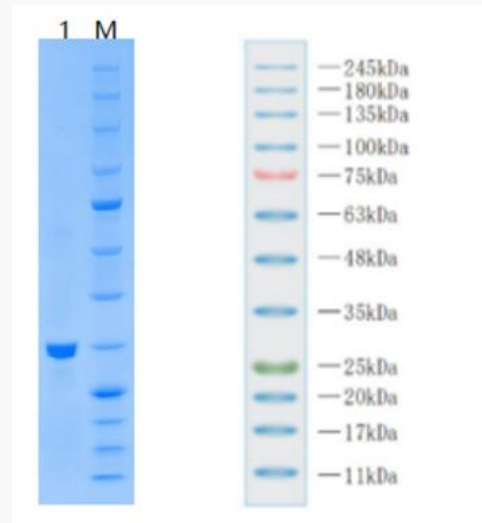
 Email: info@creative-biomart.com  Fax: 1-631-938-8127

 45-1 Ramsey Road, Shirley, NY 11967, USA

UniProt ID

Q05516

SDS-PAGE



 Tel: 1-631-559-9269 1-516-512-3133

 Email: info@creative-biomart.com  Fax: 1-631-938-8127

 45-1 Ramsey Road, Shirley, NY 11967, USA