

Recombinant Human ZBTB16 Protein, Myc/DDK-tagged, C13 and N15-labeled

Cat. No. ZBTB16-5544H Lot. No. (See product label)

SPECIFICATION

Product Overview	ZBTB16 MS Standard C13 and N15-labeled recombinant protein (NP_005997) with a C-terminal MYC/DDK tag, was expressed in HEK293 cells.
Species	Human
Source	HEK293
Description	This gene is a member of the Krueppel C2H2-type zinc-finger protein family and encodes a zinc finger transcription factor that contains nine Kruppel-type zinc finger domains at the carboxyl terminus. This protein is located in the nucleus, is involved in cell cycle progression, and interacts with a histone deacetylase. Specific instances of aberrant gene rearrangement at this locus have been associated with acute promyelocytic leukemia (APL). Alternate transcriptional splice variants have been characterized.
Molecular Mass	74.1 kDa
AA Sequence	MDLTKMGMIQLQNPSHPTGLLCKANQMRLAGTLCDVVIMVDSQEFHAHRTVLACTS KMFEILFHRNSQHYTLDFLSPKTFQQILEYAYTATLQAKAEDLDDLLYAAEILEIEYLEE QCLKMLETIQASDDNDTEATMADGGAEEDRKARYLKNIFISKHSSEESGYASVAG QSLPGPMVDQSPSVSTSFGLSAMSPTKAAVDSLMTIGQSLLQGTLQPPAGPEEPTL AGGGRHPGVAEVKTEMMQVDEVPSQDSPGAAESSISGGMGDKVEERGKEGPGTP TRSSVITSARELHYGREESAEQVPPPAEAGQAPTGRPEHPAPPPEKHLGIYSVLPNH

 Tel: 1-631-559-9269 1-516-512-3133

 Email: info@creative-biomart.com  Fax: 1-631-938-8127

 45-1 Ramsey Road, Shirley, NY 11967, USA

KDAVLSMPSSVTSGLHVQPALAVSMDFSTYGGLLPQGFIQRELF SKLGELAVGMK
 SESRTIGEQC SVCGVELPDNEAVEQHRKLHSGMKTYGCELCGKRFLDSLRLRMHLL
 AHSAGAKAFVCDQCGAQFSKEDALETHRQTHTGTDMAVFCLLCGKRFQAQSALQQ
 HMEVHAGVRSYICSECNRTFPSHTALKRHLRSHTGDHPYECEFCGSCFRDESTLKS
 HKRIHTGEKPYECNGCGKKFSLKHQLETHYRVHTGEKPFECKLCHQRSRDYSAMIK
 HLRTHNGASPYQCTICTEYCPSSLSSMQKHMKGHKPEEIPPDWRIEKTYLYLCYVTRT
 RPLEQKLISEEDLAANDILDYKDDDDKV

Purity > 80% as determined by SDS-PAGE and Coomassie blue staining

Stability Stable for 3 months from receipt of products under proper storage and handling conditions.

Storage Store at -80 centigrade. Avoid repeated freeze-thaw cycles.

Concentration 50 µg/mL as determined by BCA

Storage Buffer 100 mM glycine, 25 mM Tris-HCl, pH 7.3.

GENE INFORMATION

Gene Name ZBTB16 zinc finger and BTB domain containing 16 [Homo sapiens (human)]

Official Symbol ZBTB16

Synonyms ZBTB16; zinc finger and BTB domain containing 16; zinc finger protein 145 (Kruppel like, expressed in promyelocytic leukemia), ZNF145; zinc finger and BTB domain-containing protein 16; PLZF; zinc finger protein PLZF; zinc finger protein 145 (Kruppel-like, expressed in promyelocytic leukemia); ZNF145;

Gene ID 7704

 Tel: 1-631-559-9269 1-516-512-3133

 Email: info@creative-biomart.com  Fax: 1-631-938-8127

 45-1 Ramsey Road, Shirley, NY 11967, USA

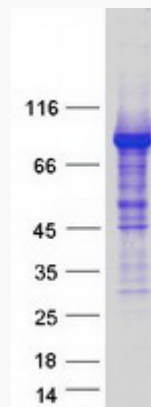
mRNA Refseq [NM_006006](#)

Protein Refseq [NP_005997](#)

MIM [176797](#)

UniProt ID [Q05516](#)

SDS-PAGE



 Tel: 1-631-559-9269 1-516-512-3133

 Email: info@creative-biomart.com  Fax: 1-631-938-8127

 45-1 Ramsey Road, Shirley, NY 11967, USA