

Recombinant Human ZBTB16 protein, His-tagged

Cat. No. ZBTB16-6744H Lot. No. (See product label)

SPECIFICATION

Product Overview	Recombinant Human ZBTB16 protein(553-673 aa), fused with N-terminal His tag, was expressed in E.coli.
Species	Human
Source	E.coli
ProteinLength	553-673 aa
Form	The purified protein was lyophilized from sterile phosphate-buffered saline (PBS: 58 mM Na ₂ HPO ₄ , 17 mM NaH ₂ PO ₄ , 68 mM NaCl, pH 7.4). Prior to lyophilization, 5% (w/v) trehalose and 5% (w/v) mannitol were incorporated as cryoprotective excipients.
AASequence	SCFRDESTLKSHKRIHTGEKPYECNGCGKKFSLKHQLETHYRVHTGEKPFECKLCH QRSRDYSAMIKHLRTHNGASPYQCTICTEYCPSLSSMQKHMKGHKPEEIPPDWRIE KTYLYLCYV
Purity	85%, by SDS-PAGE with Coomassie Brilliant Blue staining.
Storage	Store at 2-8°C for 1-2 weeks. Aliquot and store at -20°C to -80°C for up to 3 months, reconstitution with sterile water and addition of an equal volume of glycerol. Avoid repeat freeze-thaw cycles.
Reconstitution	Dissolve the product in 200 µl sterile water to achieve a working concentration of 0.25

 Tel: 1-631-559-9269 1-516-512-3133

 Email: info@creative-biomart.com  Fax: 1-631-938-8127

 45-1 Ramsey Road, Shirley, NY 11967, USA

g/μl. If experimental compatibility allows, mix the aqueous solution with an equal volume of glycerol (1:1 ratio) after initial reconstitution.

GENE INFORMATION

Gene Name	ZBTB16 zinc finger and BTB domain containing 16 [Homo sapiens]
Official Symbol	ZBTB16
Synonyms	ZBTB16; zinc finger and BTB domain containing 16; zinc finger protein 145 (Kruppel like, expressed in promyelocytic leukemia) , ZNF145; zinc finger and BTB domain-containing protein 16; PLZF; zinc finger protein PLZF; zinc finger protein 145 (Kruppel-like, expressed in promyelocytic leukemia); ZNF145;
Gene ID	7704
mRNA Refseq	NM_001018011
Protein Refseq	NP_001018011
MIM	176797
UniProt ID	Q05516

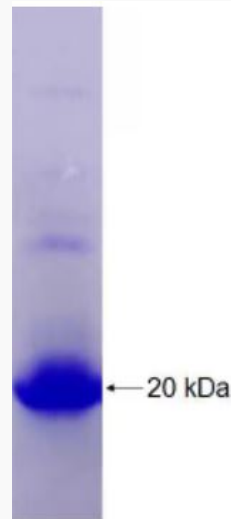
 Tel: 1-631-559-9269 1-516-512-3133

 Email: info@creative-biomart.com  Fax: 1-631-938-8127

 45-1 Ramsey Road, Shirley, NY 11967, USA



SDS-PAGE



☎ Tel: 1-631-559-9269 1-516-512-3133

☎ Email: info@creative-biomart.com ☎ Fax: 1-631-938-8127

☎ 45-1 Ramsey Road, Shirley, NY 11967, USA