

Recombinant Full Length Human ZBTB16 Protein, C-Flag-tagged

Cat. No. ZBTB16-706HFL Lot. No. (See product label)

SPECIFICATION

Product Overview	Recombinant Full Length Human ZBTB16 Protein, fused to Flag-tag at C-terminus, was expressed in Mammalian cells.
Species	Human
Source	Mammalian Cells
Description	This gene is a member of the Krueppel C2H2-type zinc-finger protein family and encodes a zinc finger transcription factor that contains nine Kruppel-type zinc finger domains at the carboxyl terminus. This protein is located in the nucleus, is involved in cell cycle progression, and interacts with a histone deacetylase. Specific instances of aberrant gene rearrangement at this locus have been associated with acute promyelocytic leukemia (APL). Alternate transcriptional splice variants have been characterized.
Form	25 mM Tris HCl, pH 7.3, 100 mM glycine, 10% glycerol.
Molecular Mass	74.1 kDa
AA Sequence	MDLTKMGMIQLQNPSHPTGLLCKANQMRLAGTLCDDVIMVDSQEFHAHRTVLACTS KMFEILFHRNSQHY TLDLFLSPKTFQQILEYAYTATLQAKAEDLDDLLYAAEILEIEYLE EQCLKMLETIQASDDNDTEATMADG GAEEEEEDRKARYLKNIFISKHSSEESGYASV AGQSLPGPMVDQSPSVSTSFGLSAMSPTKAAVDSLMTIG QSLQGTLPAGPEE PTLAGGGRHPGVAEVKTEMMQVDEVPSQDSPGAAESSISGGMGDKVEERGKEGP

 Tel: 1-631-559-9269 1-516-512-3133

 Email: info@creative-biomart.com  Fax: 1-631-938-8127

 45-1 Ramsey Road, Shirley, NY 11967, USA

GTPTRSSVITSARELHYGREETSAEQVPPPAEAGQAPTGRPEHPAPPPEKHLGIYSVL
 PNHKADAVLSMPS SVTSGLVHQPALAVSMDFSTYGGLLPQGFIQRELFKLGELAV
 GMKSESRTIGEQCVCVGVLPDNEAVE QHRKLSHGMKTYGCELCGKRFLDSLRLR
 MLLAHSAGAKAFVCDQCGAQFSKEDALETHRQTHTGTDMAV FLLCGKRFQAQS
 ALQQHMEVHAGVRSYICSECNRTFPSHTALKRHLRSHTGDHPYECEFCGSCFRDE
 ST LKSHKRIHTGEKPYECNGCGKKFSLKHQLETHYRVHTGEKPFECKLCHQRSRDY
 SAMIKHLRTHNGASPY
 QCTICTEYCPSLSSMQKHMKGHKPEEIPPDWRIEKTYLYLCYVTRTRPLEQKLISEED
 LAANDILDYKDDDDKV

Purity	> 80% as determined by SDS-PAGE and Coomassie blue staining.
Stability	Stable for 12 months from the date of receipt of the product under proper storage and handling conditions. Avoid repeated freeze-thaw cycles.
Storage	Store at -80 centigrade.
Concentration	>50 ug/mL as determined by microplate BCA method.
Preparation	Recombinant protein was captured through anti-DDK affinity column followed by conventional chromatography steps.
Protein Families	Druggable Genome, Transcription Factors
Protein Pathways	Acute myeloid leukemia, Pathways in cancer
Full Length	Full L.

GENE INFORMATION

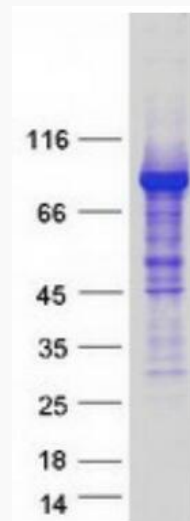
Gene Name ZBTB16 zinc finger and BTB domain containing 16 [Homo sapiens (human)]

 Tel: 1-631-559-9269 1-516-512-3133

 Email: info@creative-biomart.com  Fax: 1-631-938-8127

 45-1 Ramsey Road, Shirley, NY 11967, USA

Official Symbol	ZBTB16
Synonyms	PLZF; ZNF145
Gene ID	7704
mRNA Refseq	NM_006006.6
Protein Refseq	NP_005997.2
MIM	176797
UniProt ID	Q05516



Coomassie blue staining of purified ZBTB16 protein.

 Tel: 1-631-559-9269 1-516-512-3133

 Email: info@creative-biomart.com  Fax: 1-631-938-8127

 45-1 Ramsey Road, Shirley, NY 11967, USA