

Recombinant Human ZC2HC1A Protein, GST-tagged

Cat. No. ZC2HC1A-5160H Lot. No. (See product label)

SPECIFICATION

Product Overview	Human C8orf70 full-length ORF (ENSP00000263849, 1 a.a. - 325 a.a.) recombinant protein with GST-tag at N-terminal.
Species	Human
Source	Wheat Germ
Description	ZC2HC1A (Zinc Finger C2HC-Type Containing 1A) is a Protein Coding gene. An important paralog of this gene is ZC2HC1B.
Molecular Mass	61.5 kDa
AA Sequence	MEGLEENGGVVQVGELLPCKICGRTRFFPVALKKHGPICQKTATKKRKTDFDSSRQRA EGTDIPTVKPLKPRPEPPKKPSNWRRKHEEFIATIRAAKGLDQALKEGGKLPPPPPP SYDPDYIQPCYQRRFNENAADRHINFCKEQAARISNKGKFSTDTKGKPTSRQVY KPPALKKSNSPGTASSGSSRLPQPSGAGKTVVGVPSGKVSSSSSSSLGNKLQTLSPS HKGIAAPHAGANVKPRNSTPPSLARNPAGVLTNKRKTYTESYIARPDGDCASSLNG GNIKGIEGHSPGNLPKFCHECGTKYPVEWAKFCCECGIRRMIL
Applications	Enzyme-linked Immunoabsorbent Assay Western Blot (Recombinant protein) Antibody Production Protein Array
Notes	Best use within three months from the date of receipt of this protein.

 Tel: 1-631-559-9269 1-516-512-3133

 Email: info@creative-biomart.com  Fax: 1-631-938-8127

 45-1 Ramsey Road, Shirley, NY 11967, USA

Storage Store at -80 centigrade. Aliquot to avoid repeated freezing and thawing.

Storage Buffer 50 mM Tris-HCl, 10 mM reduced Glutathione, pH=8.0 in the elution buffer.

GENE INFORMATION

Gene Name ZC2HC1A zinc finger C2HC-type containing 1A [Homo sapiens (human)]

Official Symbol ZC2HC1A

Synonyms FAM164A; ZC2HC1A; zinc finger C2HC-type containing 1A; CGI-62; C8orf70; FAM164A; zinc finger C2HC domain-containing protein 1A; family with sequence similarity 164, member A; protein FAM164A

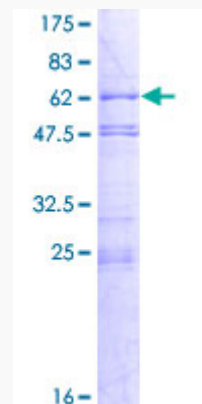
Gene ID 51101

mRNA Refseq NM_016010

Protein Refseq NP_057094

UniProt ID Q96GY0

Quality Control Testing



 Tel: 1-631-559-9269 1-516-512-3133

 Email: info@creative-biomart.com  Fax: 1-631-938-8127

 45-1 Ramsey Road, Shirley, NY 11967, USA



12.5% SDS-PAGE Stained with Coomassie Blue.

 Tel: 1-631-559-9269 1-516-512-3133

 Email: info@creative-biomart.com  Fax: 1-631-938-8127

 45-1 Ramsey Road, Shirley, NY 11967, USA