

Recombinant Human ZC3H12A protein, His-tagged

Cat. No. ZC3H12A-3432H Lot. No. (See product label)

SPECIFICATION

Product Overview	Recombinant Human ZC3H12A protein(Q5D1E8)(1-599aa), fused with N-terminal His tag, was expressed in E.coli.
Species	Human
Source	E.coli
ProteinLength	1-599aa
Form	If the delivery form is liquid, the default storage buffer is Tris/PBS-based buffer, 5%-50% glycerol. If the delivery form is lyophilized powder, the buffer before lyophilization is Tris/PBS-based buffer, 6% Trehalose, pH 8.0.
Molecular Mass	69.8 kDa
Purity	Greater than 85% as determined by SDS-PAGE.
Storage	Store at -20°C/-80°C upon receipt, aliquoting is necessary for mutiple use. Avoid repeated freeze-thaw cycles.
Reconstitution	We recommend that this vial be briefly centrifuged prior to opening to bring the contents to the bottom. Please reconstitute protein in deionized sterile water to a concentration of 0.1-1.0 mg/mL. We recommend to add 5-50% of glycerol (final concentration) and aliquot for long-term storage at -20°C/-80°C.

 Tel: 1-631-559-9269 1-516-512-3133

 Email: info@creative-biomart.com  Fax: 1-631-938-8127

 45-1 Ramsey Road, Shirley, NY 11967, USA

AA Sequence

MSGPCGEKPVLEASPTMSLWFEEDSHSRQGTPRPGQELAAEEASALELQMKVDF
 RKLGYSSTEIHSV LQKLG VQADTNTVLGELVKHGTATERERQTSPDPCQLPLVPR
 GGGTPKAPNLEPPLPEEEKEGSDLRPVVIDGSNVAMSHGNKEVFSCRGILLAVNWF
 LERGHTDITVFPVSWRKEQPRPDVPI TDQHILRELEKKKILVFTPSRRVGGKRVCYD
 DRFIVKLAYESDGIVVSN DTYRDLQGERQE WKRFIEERLLMYSFVNDKFMPPDDPLG
 RHGPSLDNFLRKKPLTLEHRKQPCPYGRKCTYGIKCRFFHPERPSCPQRSVADEL R
 ANALLSPPRAPSKDKNGRRPSPSSQSSSLTESEQCSLDGKKLGAQASPGSRQEGL
 TQTYAPSGRSLAPSGGSGSSFGPTDWLPQTLD SLPYVSQDCLDSGIGSLESQMSEL
 WGVRRGGPGEPGPPRAPHYTGYS PYGSELPATAAFSAFGRAMGAGHFSVPADYPP
 APPAFPPREYWSEPYLPPPTSVLQEPPVQSPGAGRSPWGRAGSLAKEQASVYTK
 LCGVFPPHLVEAVMGRFPQLLDPQQLAAEILSYKSQHPSE

GENE INFORMATION

Gene Name

ZC3H12A zinc finger CCCH-type containing 12A [Homo sapiens]

Official Symbol

ZC3H12A

Synonyms

ZC3H12A; zinc finger CCCH-type containing 12A; ribonuclease ZC3H12A; FLJ23231;
 MCP induced protein 1; MCP1P1; MCP-induced protein 1; MCP-1 treatment-induced
 protein; zinc finger CCCH domain-containing protein 12A; MCP1P; dJ423B22.1; RP3-
 423B22.1;

Gene ID

80149

mRNA Refseq

NM_025079

Protein Refseq

NP_079355

MIM

610562

 Tel: 1-631-559-9269 1-516-512-3133

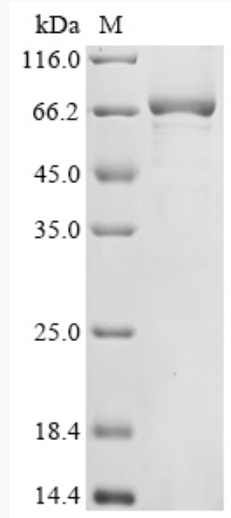
 Email: info@creative-biomart.com  Fax: 1-631-938-8127

 45-1 Ramsey Road, Shirley, NY 11967, USA

UniProt ID

Q5D1E8

SDS-PAGE



 Tel: 1-631-559-9269 1-516-512-3133

 Email: info@creative-biomart.com  Fax: 1-631-938-8127

 45-1 Ramsey Road, Shirley, NY 11967, USA