

Recombinant Human ZC3H12A Protein, Myc/DDK-tagged, C13 and N15-labeled

Cat. No. ZC3H12A-5819H **Lot. No.** (See product label)

SPECIFICATION

Product Overview	ZC3H12A MS Standard C13 and N15-labeled recombinant protein (NP_079355) with a C-terminal MYC/DDK tag, was expressed in HEK293 cells.
Species	Human
Source	HEK293
Description	ZC3H12A is an MCP1 (CCL2)-induced protein that acts as a transcriptional activator and causes cell death of cardiomyocytes, possibly via induction of genes associated with apoptosis.
Molecular Mass	65.5 kDa
AA Sequence	<p>MSGPCGEKPVLEASPTMSLWEFEDSHSRQGTPRPGQELAAEEASALELQMKVDFF RKLGYSSTEIHSV LQKLG VQADTNTVLGELVKHGTATERERQTSPDPCPQLPLVPR GGGTPKAPNLEPPLPEEEKEGSDLRPVVIDGSNVAMSHGNKEVFSCRGILLAVNWF LERGHTDITVFVPSWRKEQPRPDVPITDQHILRELEKKKILVFTPSRRVGGKRVCYD DRFIVKLAYESDGIVVSN DTYRDLQGERQE WKRFIEERLLMYSFVNDKFMPPDDPLG RHGPSLDNFLRKKPLTLEHRKQPCPYGRKCTYGIKCRFFHPERPSCPQRSVADEL R ANALLSPPRAPSKDKNGRRPSPSSQSSSLT ESEQCSLDGKKLGAQASPGSRQEGL TQTYAPSGRSLAPSGGSGSSFGPTDWLPQTLDSL PYVSQDCLDSGIGSLESQMSEL WGVRRGGGPGEPGPPRAPHYTGYS PYGSELPATAAFSAFGRAMGAGHFSVPADYPP APPAFPPREYWSEPYPLPPPTSVLQEPPVQSPGAGRSPWGRADSLAKEQASVYTK</p>

 Tel: 1-631-559-9269 1-516-512-3133

 Email: info@creative-biomart.com  Fax: 1-631-938-8127

 45-1 Ramsey Road, Shirley, NY 11967, USA

LCGVFPPHLVEAVMGRFPQLLDPQQLAAEILSYKSQHPSESGPTRTRRLEQKLISEE
DLAANDILDYKDDDDKV

Purity > 80% as determined by SDS-PAGE and Coomassie blue staining

Stability Stable for 3 months from receipt of products under proper storage and handling conditions.

Storage Store at -80 centigrade. Avoid repeated freeze-thaw cycles.

Concentration 50 µg/mL as determined by BCA

Storage Buffer 100 mM glycine, 25 mM Tris-HCl, pH 7.3.

GENE INFORMATION

Gene Name [ZC3H12A zinc finger CCCH-type containing 12A \[Homo sapiens \(human\) \]](#)

Official Symbol [ZC3H12A](#)

Synonyms ZC3H12A; zinc finger CCCH-type containing 12A; ribonuclease ZC3H12A; FLJ23231; MCP induced protein 1; MCP1P1; MCP-induced protein 1; MCP-1 treatment-induced protein; zinc finger CCCH domain-containing protein 12A; MCP1P; dJ423B22.1; RP3-423B22.1;

Gene ID [80149](#)

mRNA Refseq [NM_025079](#)

Protein Refseq [NP_079355](#)

 Tel: 1-631-559-9269 1-516-512-3133

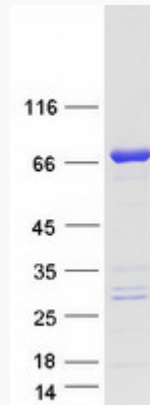
 Email: info@creative-biomart.com  Fax: 1-631-938-8127


 45-1 Ramsey Road, Shirley, NY 11967, USA

MIM 610562

UniProt ID Q5D1E8

SDS-PAGE



 Tel: 1-631-559-9269 1-516-512-3133

 Email: info@creative-biomart.com  Fax: 1-631-938-8127

 45-1 Ramsey Road, Shirley, NY 11967, USA