

# Recombinant Human ZC3H12A Protein (Asp426-Glu599), N-His tagged

**Cat. No.** ZC3H12A-6604H    **Lot. No.** (See product label)

## SPECIFICATION

<b>Product Overview</b>	Recombinant human ZC3H12A (Asp426-Glu599) fused with the N-His tag was expressed in E. coli.
<b>Species</b>	Human
<b>Source</b>	E.coli
<b>ProteinLength</b>	Asp426-Glu599
<b>Form</b>	Lyophilized powder/frozen liquid
<b>Molecular Mass</b>	20.75 kDa
<b>Purity</b>	> 90 % as determined by SDS-PAGE
<b>Notes</b>	For research use only.
<b>Storage</b>	Use a manual defrost freezer and avoid repeated freeze thaw cycles. Store at 2 to 8 centigrade for one week. Store at -20 to -80 centigrade for twelve months from the date of receipt.
<b>Storage Buffer</b>	0.01M PBS, pH 7.4, 0.02 % NLS
<b>Reconstitution</b>	Reconstitute in sterile water for a stock solution.

 Tel: 1-631-559-9269    1-516-512-3133

 Email: [info@creative-biomart.com](mailto:info@creative-biomart.com)     Fax: 1-631-938-8127

 45-1 Ramsey Road, Shirley, NY 11967, USA

**Shipping** They are shipped out with dry ice/blue ice unless customers require otherwise.

## GENE INFORMATION

**Gene Name** ZC3H12A zinc finger CCCH-type containing 12A [ Homo sapiens (human) ]

**Official Symbol** ZC3H12A

**Synonyms** ZC3H12A; zinc finger CCCH-type containing 12A; ribonuclease ZC3H12A; FLJ23231; MCP induced protein 1; MCP1P1; MCP-induced protein 1; MCP-1 treatment-induced protein; zinc finger CCCH domain-containing protein 12A; MCP1P; dJ423B22.1; RP3-423B22.1;

**Gene ID** 80149

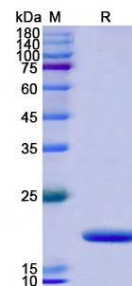
**mRNA Refseq** NM\_025079

**Protein Refseq** NP\_079355

**MIM** 610562

**UniProt ID** Q5D1E8

### SDS-PAGE



 Tel: 1-631-559-9269 1-516-512-3133

 Email: [info@creative-biomart.com](mailto:info@creative-biomart.com)  Fax: 1-631-938-8127

 45-1 Ramsey Road, Shirley, NY 11967, USA