

Recombinant Human ZC3HAV1 Protein, GST-tagged

Cat. No. ZC3HAV1-014H Lot. No. (See product label)

SPECIFICATION

Product Overview	Human ZC3HAV1 full-length ORF (NP_078901.3, 1 a.a. - 699 a.a.) recombinant protein with GST-tag at N-terminal was expressed in Wheat Germ.
Species	Human
Source	Wheat Germ
ProteinLength	1-699
Description	This gene encodes a CCCH-type zinc finger protein that is thought to prevent infection by retroviruses. Studies of the rat homolog indicate that the protein may primarily function to inhibit viral gene expression and induce an innate immunity to viral infection. Alternative splicing occurs at this locus and two variants, each encoding distinct isoforms, are described.
Molecular Mass	104.3 kDa
AA Sequence	MADPEVCCFITKILCAHGGRMALDALLQEIALSEPQLCEVLQVAGPDRFVVLETGGE AGITRSVVATTRARVCRRKYCQRPCDNLHLCKLNLGRGNYSQSERNLCKYSHEVL SEENFKVLKNHEL SGLNKEELAVLLLQSDPFFMPEICKSYKGEGRQQICNQQPPCSR LHICDHFTRGNCRFPNCLRSHNLM DRKVLAIMREHGLNPDVVQNIQD ICNSKHMQK NPPGPRAPSSHRRNMAYRARSKSRDRFFQGSQEFLASASASAERSCTPSPDQISH RASLEDAPVDDLTRKFTYLGSQDRARPPSGSSKATDLGGTSQAGTSQRFLENG SQ EDLLHG NPGSTY LASNSTSAPNWKSLT SWTNDQGARRKTVFSPTLPAARSSLGSLQ TPEAVTTRKGTGLLSSDYRIINGKSGTQDIQPGPLFNNNADGVATDITSTRSLNYKST

 Tel: 1-631-559-9269 1-516-512-3133

 Email: info@creative-biomart.com  Fax: 1-631-938-8127

 45-1 Ramsey Road, Shirley, NY 11967, USA

SSGHREISSPRIQDAGPASRDVQATGRIADDADPRVALVNDLSLSDVTSTTSSRVDDH
 DSEEICLDHLCKGCPLNGSCSKVHFHLPYRWQMLIGKTWTFEHMETIEKGYCNP
 HLCSVGSYTINFRVMSCDSFPIRRLSTPSSVTKPANSVFTTKWIWYWKNESGTW
 IQY GEEKDKRKNSNVDSYLESLYQSCPRGVVFPQAGSRNYELSFQGM
 IQTNIASKTQK DVIRRPTFVPQWYVQQMKGPE

Applications
 Enzyme-linked Immunoabsorbent Assay
 Western Blot (Recombinant protein)
 Antibody Production
 Protein Array

Storage Store at -80 centigrade. Aliquot to avoid repeated freezing and thawing.

Storage Buffer 50 mM Tris-HCl, 10 mM reduced Glutathione, pH=8.0 in the elution buffer.

GENE INFORMATION

Gene Name [ZC3HAV1 zinc finger CCCH-type containing, antiviral 1 \[Homo sapiens \(human\) \]](#)

Official Symbol [ZC3HAV1](#)

Synonyms ZC3HAV1; zinc finger CCCH-type containing, antiviral 1; ZAP; ZC3H2; ARTD13; PARP13; FLB6421; ZC3HDC2; zinc finger CCCH-type antiviral protein 1; ADP-ribosyltransferase diphtheria toxin-like 13; inactive Poly [ADP-ribose] polymerase 13; zinc finger CCCH domain-containing protein 2; zinc finger CCCH-type, antiviral 1

Gene ID [56829](#)

mRNA Refseq [NM_024625](#)

Protein Refseq [NP_078901](#)

 Tel: 1-631-559-9269 1-516-512-3133

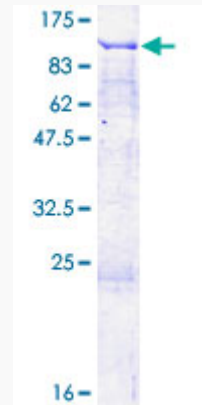
 Email: info@creative-biomart.com  Fax: 1-631-938-8127

 45-1 Ramsey Road, Shirley, NY 11967, USA

MIM 607312

UniProt ID Q7Z2W4

**Quality Control
Testing**



12.5% SDS-PAGE Stained with Coomassie Blue

 Tel: 1-631-559-9269 1-516-512-3133

 Email: info@creative-biomart.com  Fax: 1-631-938-8127

 45-1 Ramsey Road, Shirley, NY 11967, USA