

Recombinant Human ZCCHC2 protein, His-tagged

Cat. No. ZCCHC2-7844H Lot. No. (See product label)

SPECIFICATION

Product Overview	Recombinant Human ZCCHC2 protein(13-239 aa), fused with N-terminal His tag, was expressed in E.coli.
Species	Human
Source	E.coli
ProteinLength	13-239 aa
Form	The purified protein was lyophilized from sterile phosphate-buffered saline (PBS: 58 mM Na ₂ HPO ₄ , 17 mM NaH ₂ PO ₄ , 68 mM NaCl, pH 7.4). Prior to lyophilization, 5% (w/v) trehalose and 5% (w/v) mannitol were incorporated as cryoprotective excipients.
AASequence	REQERVYEWFGVLVLSAQRLEFMCGLLDLCNPLELRFLGSCLEDLARKDYHYLRDS EAKANGLSDPGPLADFREPAVRSRLIVYLALLGSENREAAGRLHRLLPQVDSVLKSL RAARGEGRGAEDERGEDGDGEQDAEKDGSPEGGIVEPRVGGGLGSRAQEEL LLLFTMASLHPAFSFHQRVTLREHLERLRAALRGGPEDAEVEVEPCKFAGPRAQVR RTEP
Purity	85%, by SDS-PAGE with Coomassie Brilliant Blue staining.
Storage	Store at 2-8°C for 1-2 weeks. Aliquot and store at -20°C to -80°C for up to 3 months, reconstitution with sterile water and addition of an equal volume of glycerol. Avoid repeat freeze-thaw cycles.

 Tel: 1-631-559-9269 1-516-512-3133

 Email: info@creative-biomart.com  Fax: 1-631-938-8127

 45-1 Ramsey Road, Shirley, NY 11967, USA

Reconstitution

Dissolve the product in 200 µl sterile water to achieve a working concentration of 0.25 g/µl. If experimental compatibility allows, mix the aqueous solution with an equal volume of glycerol (1:1 ratio) after initial reconstitution.

GENE INFORMATION**Gene Name**

ZCCHC2 zinc finger, CCHC domain containing 2 [Homo sapiens]

Official Symbol

ZCCHC2

Synonyms

ZCCHC2; zinc finger, CCHC domain containing 2; C18orf49, chromosome 18 open reading frame 49; zinc finger CCHC domain-containing protein 2; FLJ20222; FLJ20281; KIAA1744; C18orf49; MGC13269; DKFZp451A185;

Gene ID

54877

mRNA Refseq

NM_017742

Protein Refseq

NP_060212

UniProt ID

Q9C0B9

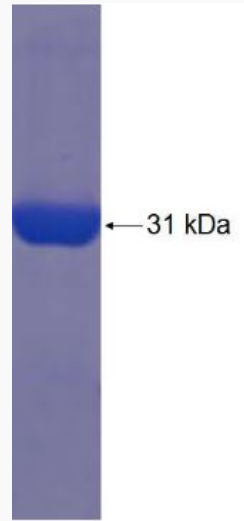
 Tel: 1-631-559-9269 1-516-512-3133

 Email: info@creative-biomart.com  Fax: 1-631-938-8127

 45-1 Ramsey Road, Shirley, NY 11967, USA



SDS-PAGE



☎ Tel: 1-631-559-9269 1-516-512-3133

☎ Email: info@creative-biomart.com ☎ Fax: 1-631-938-8127

☎ 45-1 Ramsey Road, Shirley, NY 11967, USA