

Recombinant Human ZCCHC24 Protein, Myc/DDK-tagged, C13 and N15-labeled

Cat. No. ZCCHC24-4153H **Lot. No.** (See product label)

SPECIFICATION

Product Overview	ZCCHC24 MS Standard C13 and N15-labeled recombinant protein (NP_699198) with a C-terminal MYC/DDK tag, was expressed in HEK293 cells.
Species	Human
Source	HEK293
Description	ZCCHC24 (Zinc Finger CCHC-Type Containing 24) is a Protein Coding gene. Diseases associated with ZCCHC24 include Marshall-Smith Syndrome. Gene Ontology (GO) annotations related to this gene include nucleic acid binding. An important paralog of this gene is RBBP6.
Molecular Mass	26.9 kDa
AA Sequence	MSLLSAIDTSAASVYQPAQLLNWVYLSLQDTHQASAFDAFRPVPTAGAAPPELAFGK GRPEQLGSPHLHSSYLNSFFQLQRGEALSNSVYKGYGSLNNIADGLSSLTEHFS DLTLTSEARKPSKRPPPNYLCHLCFNKGHYIKDCPQARPKGEGLTPYQGKKRCFGE YKCPKCKRKWMSGNSWANMGQECIKCHINVYPHKQRPLEKPDGLDVSDQSKEHP QHLCEKCKVLGYCRRVQTRTRPLEQKLISEEDLAANDILDYKDDDDKV
Purity	> 80% as determined by SDS-PAGE and Coomassie blue staining
Stability	Stable for 3 months from receipt of products under proper storage and handling conditions.

 Tel: 1-631-559-9269 1-516-512-3133

 Email: info@creative-biomart.com  Fax: 1-631-938-8127

 45-1 Ramsey Road, Shirley, NY 11967, USA

Storage	Store at -80 centigrade. Avoid repeated freeze-thaw cycles.
Concentration	50 µg/mL as determined by BCA
Storage Buffer	100 mM glycine, 25 mM Tris-HCl, pH 7.3.
GENE INFORMATION	
Gene Name	ZCCHC24 zinc finger CCHC-type containing 24 [Homo sapiens (human)]
Official Symbol	ZCCHC24
Synonyms	ZCCHC24; zinc finger CCHC-type containing 24; Z3CXXC8; C10orf56; zinc finger CCHC domain-containing protein 24; zinc finger, 3CxxC-type 8; zinc finger, CCHC domain containing 24
Gene ID	219654
mRNA Refseq	NM_153367
Protein Refseq	NP_699198
UniProt ID	Q8N2G6

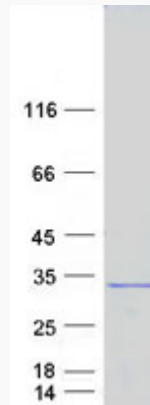
 Tel: 1-631-559-9269 1-516-512-3133

 Email: info@creative-biomart.com  Fax: 1-631-938-8127

 45-1 Ramsey Road, Shirley, NY 11967, USA



SDS-PAGE



Tel: 1-631-559-9269 1-516-512-3133

Email: info@creative-biomart.com Fax: 1-631-938-8127

45-1 Ramsey Road, Shirley, NY 11967, USA