

Recombinant Human ZDHHC12 Protein, Myc/DDK-tagged, C13 and N15-labeled

Cat. No. ZDHHC12-3276H **Lot. No.** (See product label)

SPECIFICATION

Product Overview	ZDHHC12 MS Standard C13 and N15-labeled recombinant protein (NP_116188) with a C-terminal MYC/DDK tag, was expressed in HEK293 cells.
Species	Human
Source	HEK293
Description	Palmitoyltransferase that could catalyze the addition of palmitate onto various protein substrates. Has a palmitoyltransferase activity toward gephyrin/GPHN, regulating its clustering at synapses and its function in gamma-aminobutyric acid receptor clustering. Thereby, indirectly regulates GABAergic synaptic transmission.
Molecular Mass	30.6 kDa
AA Sequence	MAPWALLSPGVLVRTGHTVLTWGITLVFLHDTELQWEEQGELLPLTFLLLVLGSL LLYLAVSLMDPGYVNVQPQPQEELKEEQTAMVPPAIPLRRCRYCLVLQPLRARHCR ECRRCVRRYDHHCPWMENCVGERNHPLFVVYLALQLVLLWGLYLAWSGLRFFQP WGLWLRSSGLLFATFLLLSLFSLVASLLLVSHTLVASNTTTFEFISSHRIAYLRQRPS NPFDRGLTRNLAHFFCGWPSGSWETLWAEIEEEGSSPAVTRTRPLEQKLISEEDLA ANDILDYKDDDDKV
Purity	> 80% as determined by SDS-PAGE and Coomassie blue staining
Stability	Stable for 3 months from receipt of products under proper storage and handling

 Tel: 1-631-559-9269 1-516-512-3133

 Email: info@creative-biomart.com  Fax: 1-631-938-8127

 45-1 Ramsey Road, Shirley, NY 11967, USA

conditions.

Storage Store at -80 centigrade. Avoid repeated freeze-thaw cycles.

Concentration 50 µg/mL as determined by BCA

Storage Buffer 100 mM glycine, 25 mM Tris-HCl, pH 7.3.

GENE INFORMATION

Gene Name ZDHHC12 zinc finger DHHC-type palmitoyltransferase 12 [Homo sapiens (human)]

Official Symbol ZDHHC12

Synonyms ZDHHC12; zinc finger DHHC-type palmitoyltransferase 12; ZNF400; DHHC-12; palmitoyltransferase ZDHHC12; DHHC domain-containing cysteine-rich protein 12; probable palmitoyltransferase ZDHHC12; zinc finger DHHC domain-containing protein 12; zinc finger DHHC-type containing 12; zinc finger protein 400; EC 2.3.1.225

Gene ID 84885

mRNA Refseq NM_032799

Protein Refseq NP_116188

UniProt ID Q96GR4

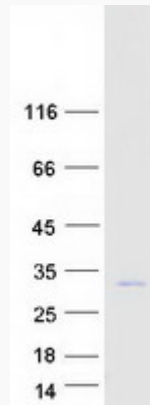
 Tel: 1-631-559-9269 1-516-512-3133

 Email: info@creative-biomart.com  Fax: 1-631-938-8127

 45-1 Ramsey Road, Shirley, NY 11967, USA



SDS-PAGE



Tel: 1-631-559-9269 1-516-512-3133

Email: info@creative-biomart.com Fax: 1-631-938-8127

45-1 Ramsey Road, Shirley, NY 11967, USA