

## Recombinant Human ZDHHC8 Protein (1-42), N-GST tagged

Cat. No. ZDHHC8-01H Lot. No. (See product label)

### SPECIFICATION

<b>Product Overview</b>	Human ZDHHC8 full-length ORF ( AAH09442, 1 a.a. - 42 a.a.) recombinant protein with GST-tag at N-terminal.
<b>Species</b>	Human
<b>Source</b>	Wheat Germ
<b>ProteinLength</b>	1-42
<b>Description</b>	This gene encodes a four transmembrane protein that is a member of the zinc finger DHHC domain-containing protein family. The encoded protein may function as a palmitoyltransferase. Defects in this gene may be associated with a susceptibility to schizophrenia. Alternate splicing of this gene results in multiple transcript variants. A pseudogene of this gene is found on chromosome 22.
<b>Molecular Mass</b>	30.36 kDa
<b>AA Sequence</b>	MDRGTQGPHRPSDTACGLPDRVSPARLLLLTNALPFTDPAGSL
<b>Applications</b>	Enzyme-linked Immunoabsorbent Assay Western Blot (Recombinant protein) Antibody Production Protein Array
<b>Notes</b>	Best use within three months from the date of receipt of this protein.

 Tel: 1-631-559-9269 1-516-512-3133

 Email: [info@creative-biomart.com](mailto:info@creative-biomart.com)  Fax: 1-631-938-8127

 45-1 Ramsey Road, Shirley, NY 11967, USA

**Storage** Store at -80 centigrade. Aliquot to avoid repeated freezing and thawing.

**Storage Buffer** 50 mM Tris-HCl, 10 mM reduced Glutathione, pH=8.0 in the elution buffer.

## GENE INFORMATION

**Gene Name** ZDHHC8 zinc finger DHHC-type palmitoyltransferase 8 [ Homo sapiens (human) ]

**Official Symbol** ZDHHC8

**Synonyms**

ZDHHC8; zinc finger DHHC-type palmitoyltransferase 8; DHHC8; ZNF378; ZDHHCL1; palmitoyltransferase ZDHHC8; membrane-associated DHHC8 zinc finger protein; zinc finger DHHC-type containing 8; zinc finger protein 378; zinc finger, DHHC domain like containing 1; EC 2.3.1.225

**Gene ID** 29801

**mRNA Refseq** NM\_013373

**Protein Refseq** NP\_037505

**MIM** 608784

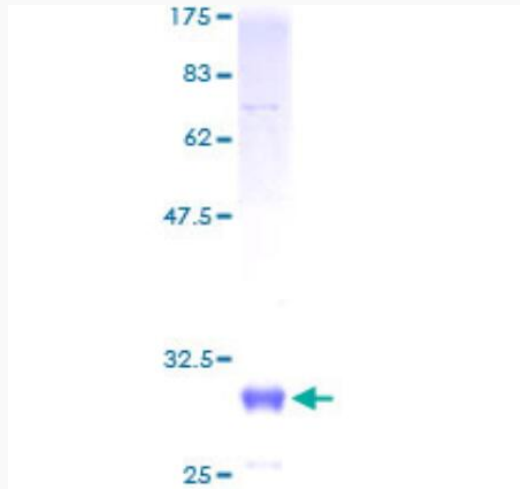
**UniProt ID** Q2TGE9

 Tel: 1-631-559-9269 1-516-512-3133

 Email: [info@creative-biomart.com](mailto:info@creative-biomart.com)  Fax: 1-631-938-8127

 45-1 Ramsey Road, Shirley, NY 11967, USA

**Quality Control  
Testing**



12.5 % SDS-PAGE Stained with Coomassie Blue.

 Tel: 1-631-559-9269 1-516-512-3133

 Email: [info@creative-biomart.com](mailto:info@creative-biomart.com)  Fax: 1-631-938-8127

 45-1 Ramsey Road, Shirley, NY 11967, USA