

Recombinant Human ZEB1 Protein, GST-tagged

Cat. No. ZEB1-22H Lot. No. (See product label)

SPECIFICATION

Product Overview	Recombinant Human ZEB1(801 a.a. - 900 a.a.) fused with GST tag at N-terminal was expressed in Wheat Germ.
Species	Human
Source	Wheat Germ
ProteinLength	801 a.a. - 900 a.a.
Description	This gene encodes a zinc finger transcription factor. The encoded protein likely plays a role in transcriptional repression of interleukin 2. Mutations in this gene have been associated with posterior polymorphous corneal dystrophy-3 and late-onset Fuchs endothelial corneal dystrophy. Alternatively spliced transcript variants encoding different isoforms have been described.
Form	50 mM Tris-HCl, 10 mM reduced Glutathione, pH=8.0 in the elution buffer.
Molecular Mass	36.74 kDa
AA Sequence	NIAIPTVTAQLPTIVAIAIQNSVPCLRALAAANKQTILIPQVAYTYSTTVSPAQQEPPLKVI QPNGNQDERQDTSSEGVSNVEDQNDSDSTPPKKKMRKTE
Applications	Enzyme-linked Immunoabsorbent; Assay Western Blot (Recombinant protein); Antibody Production; Protein Array

 Tel: 1-631-559-9269 1-516-512-3133

 Email: info@creative-biomart.com  Fax: 1-631-938-8127

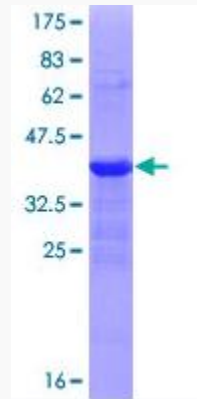
 45-1 Ramsey Road, Shirley, NY 11967, USA

Notes	Best use within three months from the date of receipt of this protein.
Storage	Store at -80 centigrade. Aliquot to avoid repeated freezing and thawing.
GENE INFORMATION	
Gene Name	ZEB1 zinc finger E-box binding homeobox 1 [Homo sapiens]
Official Symbol	ZEB1
Synonyms	ZEB1; zinc finger E-box binding homeobox 1; posterior polymorphous corneal dystrophy 3 , PPCD3, TCF8, transcription factor 8 (represses interleukin 2 expression); zinc finger E-box-binding homeobox 1; AREB6; BZP; NIL 2 A; ZEB; Zfhcp; Zfhx1a; negative regulator of IL2; delta-crystallin enhancer binding factor 1; posterior polymorphous corneal dystrophy 3; zinc finger homeodomain enhancer-binding protein; transcription factor 8 (represses interleukin 2 expression); TCF8; FECD6; NIL2A; PPCD3; ZFHCP; ZFHX1A; DELTAEF1; MGC133261;
Gene ID	6935
mRNA Refseq	NM_001128128
Protein Refseq	NP_001121600
MIM	189909
UniProt ID	P37275

 Tel: 1-631-559-9269 1-516-512-3133

 Email: info@creative-biomart.com  Fax: 1-631-938-8127

 45-1 Ramsey Road, Shirley, NY 11967, USA



 Tel: 1-631-559-9269 1-516-512-3133

 Email: info@creative-biomart.com  Fax: 1-631-938-8127

 45-1 Ramsey Road, Shirley, NY 11967, USA