

Recombinant Human ZER1 protein, His-tagged

Cat. No. ZER1-3797H Lot. No. (See product label)

SPECIFICATION

Product Overview	Recombinant Human ZER1 protein(324-766 aa), fused with N-terminal His tag, was expressed in E.coli.
Species	Human
Source	E.coli
ProteinLength	324-766 aa
Form	The purified protein was lyophilized from sterile phosphate-buffered saline (PBS: 58 mM Na ₂ HPO ₄ , 17 mM NaH ₂ PO ₄ , 68 mM NaCl, pH 7.4). Prior to lyophilization, 5% (w/v) trehalose and 5% (w/v) mannitol were incorporated as cryoprotective excipients. The protein was eluted with a buffer containing 300 mM imidazole.
AASequence	RPLQFLGLFENSLCRLTHIPAYKVSGDKNEEQVLNAIEAYTEHRPEITSRAINLLFDIA RIERCNQLLRALKLVITALKCHKYDRNIQVTGSAALFYLTNSEYRSEQSVKLRRQVIQ VVLNGMESYQEVTVQRNCCLTLCNFSIPEEELFQYRRVNEILLSILNPTRQDESIQRI AVHLCNALVCQVDNDHKEAVGKMGFVVTMLKLIQKKLLDKTCDQVMEFSWSALWNI TDETPDNCEMFLNFNGMKLFLDCLKEFPEKQELHRNMLGLLGNVAEVKELRPQLMT SQFISVFSNLLESKADGIEVSYNACGVLSHIMFDGPEAWGVCEPQREEVEERMWAAI QSWDINSRRNINYSFEPILRLLPQGISPVSQHWATWALYNLVSYPDKYCPLLIKEG GMPLLRDIKMATARQETKEMARKVIEHCSNFKEENMDTSR
Purity	85%, by SDS-PAGE with Coomassie Brilliant Blue staining.

 Tel: 1-631-559-9269 1-516-512-3133

 Email: info@creative-biomart.com  Fax: 1-631-938-8127

 45-1 Ramsey Road, Shirley, NY 11967, USA

Storage Store at 2-8°C for 1-2 weeks. Aliquot and store at -20°C to -80°C for up to 3 months, reconstitution with sterile water and addition of an equal volume of glycerol. Avoid repeat freeze-thaw cycles.

Reconstitution Dissolve the product in 200 µl sterile water to achieve a working concentration of 0.25 g/µl. If experimental compatibility allows, mix the aqueous solution with an equal volume of glycerol (1:1 ratio) after initial reconstitution.

GENE INFORMATION

Gene Name ZER1 zer-1 homolog (C. elegans) [Homo sapiens]

Official Symbol ZER1

Synonyms ZER1; zer-1 homolog (C. elegans); C9orf60, chromosome 9 open reading frame 60 , zyg 11 homolog B (C. elegans) like , ZYG11BL; protein zer-1 homolog; Hzyg; ZYG; ZYG homolog; homolog of Zyg-11; zyg-11 homolog B-like protein; C9orf60; ZYG11BL; RP11-545E17.4;

Gene ID 10444

mRNA Refseq NM_006336

Protein Refseq NP_006327

UniProt ID Q7Z7L7

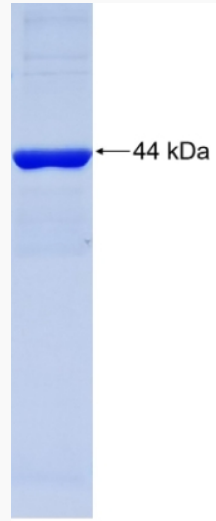
 Tel: 1-631-559-9269 1-516-512-3133

 Email: info@creative-biomart.com  Fax: 1-631-938-8127

 45-1 Ramsey Road, Shirley, NY 11967, USA



SDS-PAGE



Tel: 1-631-559-9269 1-516-512-3133

Email: info@creative-biomart.com Fax: 1-631-938-8127

45-1 Ramsey Road, Shirley, NY 11967, USA