

# Recombinant Human ZFAND1 Protein, Myc/DDK-tagged, C13 and N15-labeled

**Cat. No.** ZFAND1-1430H    **Lot. No.** (See product label)

## SPECIFICATION

|                         |   |
|-------------------------|---|
| <b>Product Overview</b> | ZFAND1 MS Standard C13 and N15-labeled recombinant protein (NP_078975) with a C-terminal MYC/DDK tag, was expressed in HEK293 cells.  |
| <b>Species</b>          | Human   |
| <b>Source</b>           | HEK293  |
| <b>Description</b>      | ZFAND1 (Zinc Finger AN1-Type Containing 1) is a Protein Coding gene. An important paralog of this gene is ZFAND2B.  |
| <b>Molecular Mass</b>   | 30.6 kDa  |
| <b>AA Sequence</b>      | MAELDIGQHCQVEHCRQRDFLPFVCDDCSGIFCLEHRSRESHGCPEVTVINERLKT<br>DQHTSYPCSFKDCAERELVAVICPYCEKNFCLRHRHQSDHECEKLEIPKPRMAATQ<br>KLVKDIIDSKTGETASKRWKGAKNSETAAKVALMKLKMHADGDKSLPQTERIYFQVF<br>LPKGSKEKSKPMFFCHRWSIGKAIDFAASLARLKNNDNNKFTAKKLRLCHITSGEALPL<br>DHTLETWIAKEDCPLYNGGNIILEYLNDEEQFCKNVESSYLETRTRPLEQKLISEEDLA<br>ANDILDYKDDDDKV |
| <b>Purity</b>           | > 80% as determined by SDS-PAGE and Coomassie blue staining   |
| <b>Stability</b>        | Stable for 3 months from receipt of products under proper storage and handling conditions.  |

 Tel: 1-631-559-9269    1-516-512-3133

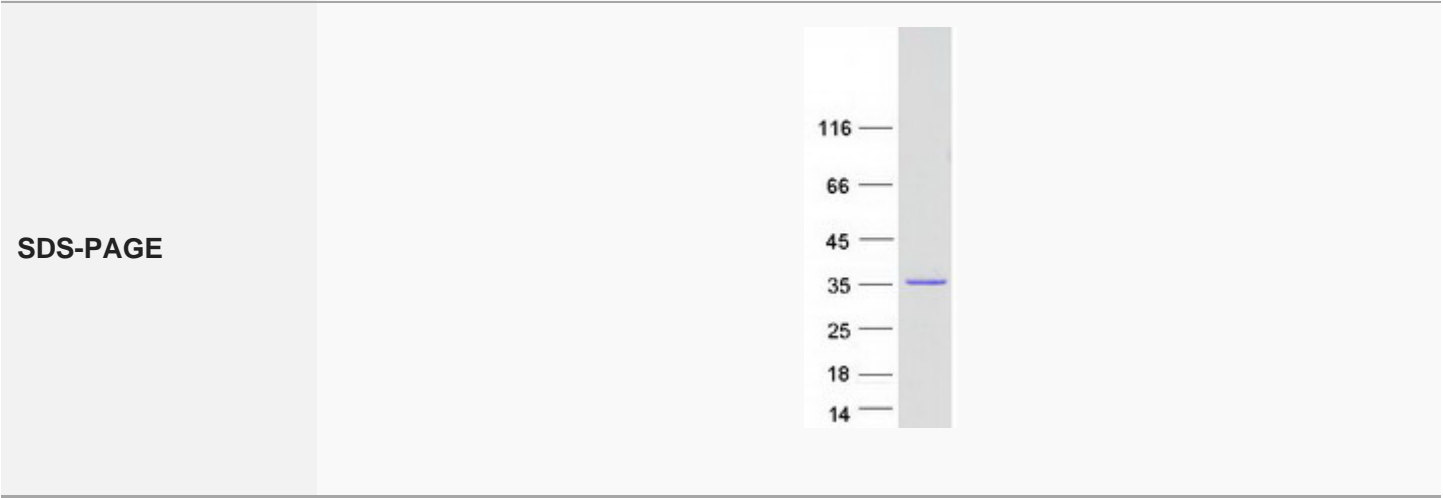
 Email: [info@creative-biomart.com](mailto:info@creative-biomart.com)     Fax: 1-631-938-8127

 45-1 Ramsey Road, Shirley, NY 11967, USA

|                       |   |
|-----------------------|---|
| <b>Storage</b>        | Store at -80 centigrade. Avoid repeated freeze-thaw cycles. |
| <b>Concentration</b>  | 50 µg/mL as determined by BCA                               |
| <b>Storage Buffer</b> | 100 mM glycine, 25 mM Tris-HCl, pH 7.3.                     |

## GENE INFORMATION

|                        |   |
|------------------------|---|
| <b>Gene Name</b>       | ZFAND1 zinc finger AN1-type containing 1 [ Homo sapiens (human) ]                 |
| <b>Official Symbol</b> | ZFAND1  |
| <b>Synonyms</b>        | ZFAND1; zinc finger, AN1-type domain 1; AN1-type zinc finger protein 1; FLJ14007; |
| <b>Gene ID</b>         | 79752   |
| <b>mRNA Refseq</b>     | NM_024699   |
| <b>Protein Refseq</b>  | NP_078975   |
| <b>UniProt ID</b>      | Q8TCF1  |



Tel: 1-631-559-9269 1-516-512-3133

Email: [info@creative-biomart.com](mailto:info@creative-biomart.com) Fax: 1-631-938-8127

45-1 Ramsey Road, Shirley, NY 11967, USA