

Recombinant Human ZFAND5 protein, GST-tagged

Cat. No. ZFAND5-6744H Lot. No. (See product label)

SPECIFICATION

Product Overview	Recombinant Human ZFAND5 protein(75-141 aa), fused with N-terminal GST tag, was expressed in E.coli.
Species	Human
Source	E.coli
ProteinLength	75-141 aa
Form	The purified protein was lyophilized from sterile phosphate-buffered saline (PBS: 58 mM Na ₂ HPO ₄ , 17 mM NaH ₂ PO ₄ , 68 mM NaCl, pH 8.0). Prior to lyophilization, 5% (w/v) trehalose and 5% (w/v) mannitol were incorporated as cryoprotective excipients.
AASequence	NCEGAAGSTSEKSRNVPVAALPVTQQMTEMSISREDKITTPKTEVSEPVVTQPSPSV SQPSTSQSEE
Purity	90%, by SDS-PAGE with Coomassie Brilliant Blue staining.
Storage	Store at 2-8°C for 1-2 weeks. Aliquot and store at -20°C to -80°C for up to 3 months, reconstitution with sterile water and addition of an equal volume of glycerol. Avoid repeat freeze-thaw cycles.
Reconstitution	Dissolve the product in 200 µl sterile water to achieve a working concentration of 0.25 g/

 Tel: 1-631-559-9269 1-516-512-3133

 Email: info@creative-biomart.com  Fax: 1-631-938-8127

 45-1 Ramsey Road, Shirley, NY 11967, USA

μl. If experimental compatibility allows, mix the aqueous solution with an equal volume of glycerol (1:1 ratio) after initial reconstitution.

GENE INFORMATION

Gene Name ZFAND5 zinc finger, AN1-type domain 5 [Homo sapiens]

Official Symbol ZFAND5

Synonyms

ZFAND5; zinc finger, AN1-type domain 5; ZA20D2, zinc finger protein 216 , zinc finger, A20 domain containing 2 , ZNF216; AN1-type zinc finger protein 5; ZFAND5A; zinc finger protein 216; zinc finger, A20 domain containing 2; zinc finger A20 domain-containing protein 2; ZA20D2; ZNF216;

Gene ID 7763

mRNA Refseq NM_001102420

Protein Refseq NP_001095890

MIM 604761

UniProt ID O76080

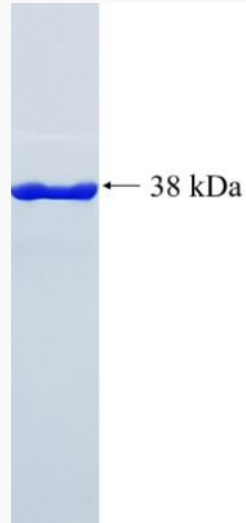
 Tel: 1-631-559-9269 1-516-512-3133

 Email: info@creative-biomart.com  Fax: 1-631-938-8127

 45-1 Ramsey Road, Shirley, NY 11967, USA



SDS-PAGE



Tel: 1-631-559-9269 1-516-512-3133

Email: info@creative-biomart.com Fax: 1-631-938-8127

45-1 Ramsey Road, Shirley, NY 11967, USA