

Recombinant Human ZFYVE27 Protein, Myc/DDK-tagged, C13 and N15-labeled

Cat. No. ZFYVE27-2561H Lot. No. (See product label)

SPECIFICATION

Product Overview

ZFYVE27 MS Standard C13 and N15-labeled recombinant protein (NP_001002261) with a C-terminal MYC/DDK tag, was expressed in HEK293 cells.

Species

Human

Source

HEK293

Description

This gene encodes a protein with several transmembrane domains, a Rab11-binding domain and a lipid-binding FYVE finger domain. The encoded protein appears to promote neurite formation. A mutation in this gene has been reported to be associated with hereditary spastic paraplegia, however the pathogenicity of the mutation, which may simply represent a polymorphism, is unclear.

Molecular Mass

46.2 kDa

AA Sequence

MQTSEREGSGPELSPSVMPEAPLESPPFPTKSPAFDLFNLVLSYKRLEIYLEPLKDA
 GDGVRYLLRWQMPLCSLLTCLGLNVFLTLNEGAWYSVGALMISVPALLGYLQEV
 RARLPDSELMRRKYHSVRQEDLQRGRLSRPEAVA EVKSFILQLEAFLSRLCCTCEAA
 YRVLHWENPVVSSQFYGALLGTVCMYLLPLCWVLTLLNSTLFLGNVEFFRVVSEYR
 ASLQQRMNPKQEEHAFESPPPPDVGKDG LMDSTPALTPTESLSSQDLTPGSVEE
 AEEAEPDEEFKDAIEETHLVVLEDEGAPCPAEDELALQDNGFLSKNEVLR SKVSRL
 TERLRKRYPTNFGNCTGCSATFSVLKRRRSCSNCGNSFCRCCSFKVPKSSMGA
 TAPEAQRET VFCASCNQTL SKTRTRPLEQKLISEEDLAANDILDYKDDDDKV

 Tel: 1-631-559-9269 1-516-512-3133

 Email: info@creative-biomart.com  Fax: 1-631-938-8127

 45-1 Ramsey Road, Shirley, NY 11967, USA

Purity	> 80% as determined by SDS-PAGE and Coomassie blue staining
Stability	Stable for 3 months from receipt of products under proper storage and handling conditions.
Storage	Store at -80 centigrade. Avoid repeated freeze-thaw cycles.
Concentration	50 µg/mL as determined by BCA
Storage Buffer	100 mM glycine, 25 mM Tris-HCl, pH 7.3.

GENE INFORMATION

Gene Name	ZFYVE27 zinc finger FYVE-type containing 27 [Homo sapiens (human)]
Official Symbol	ZFYVE27
Synonyms	ZFYVE27; zinc finger FYVE-type containing 27; SPG33; PROTRUDIN; protrudin; spastic paraplegia 33 protein; zinc finger FYVE domain containing 27
Gene ID	118813
mRNA Refseq	NM_001002261
Protein Refseq	NP_001002261
MIM	610243
UniProt ID	Q5T4F4

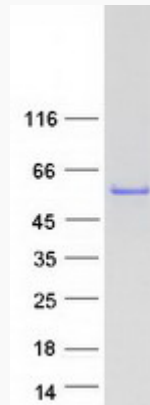
 Tel: 1-631-559-9269 1-516-512-3133

 Email: info@creative-biomart.com  Fax: 1-631-938-8127

 45-1 Ramsey Road, Shirley, NY 11967, USA



SDS-PAGE



Tel: 1-631-559-9269 1-516-512-3133

Email: info@creative-biomart.com Fax: 1-631-938-8127

45-1 Ramsey Road, Shirley, NY 11967, USA